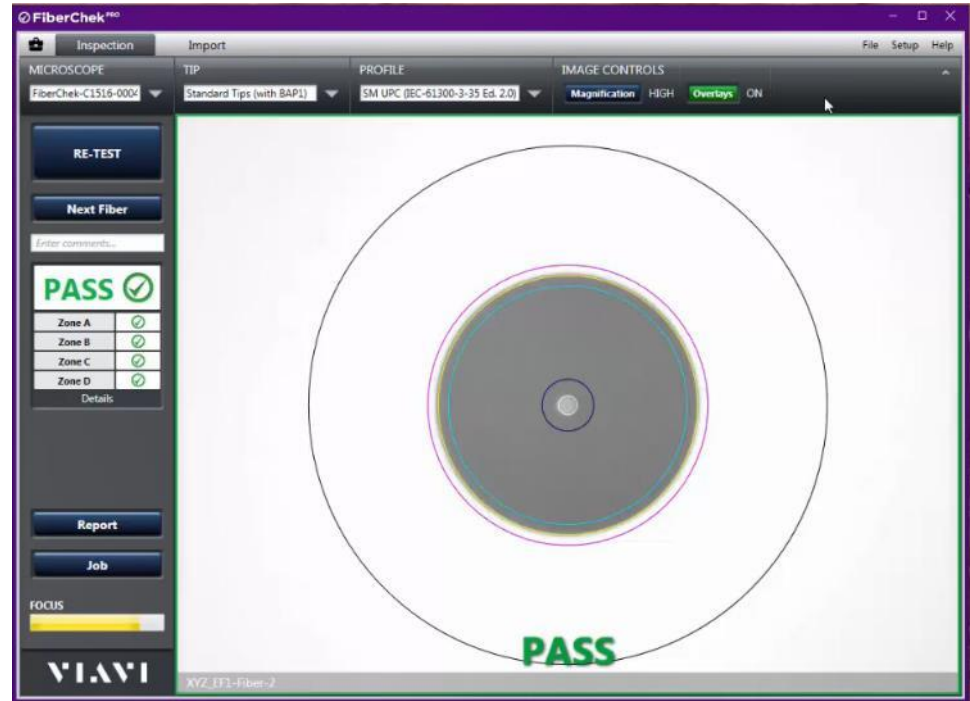




FiberChekPRO V2.0

What's New

May 2017



Job Workflow

New Functionality to Simplify Collecting Analysis Results

- Users can now select between two workflows

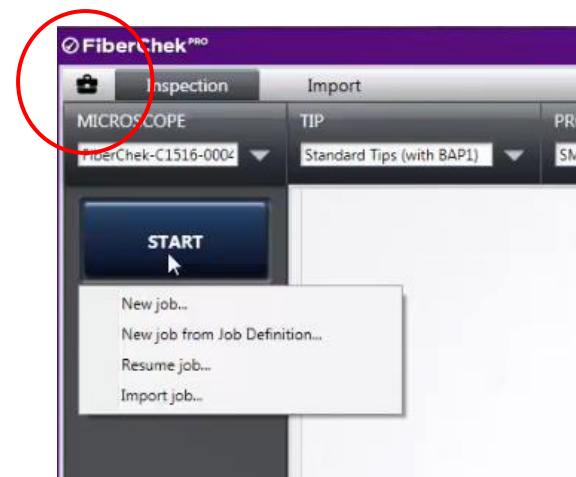
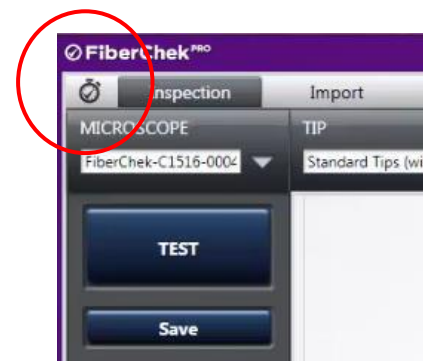
- **Quick Test** mode (the standard mode)

- Discrete tests
- Results saved individually
- Classic FiberChekPRO test workflow
- No job definition capability

- **Job mode** (categorizes/groups results)

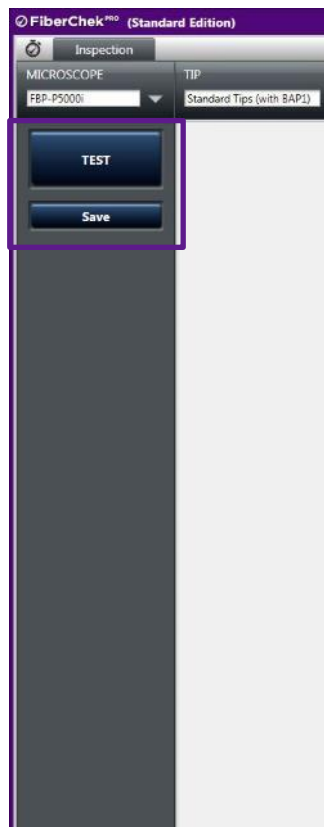
- Combines tests
- Pre-assign names
- Utilize pre-configured job definitions
- Saves results in a group

- Available in FiberChekPRO™
- Available in FiberChekMOBILE™ for iOS



Job Workflow

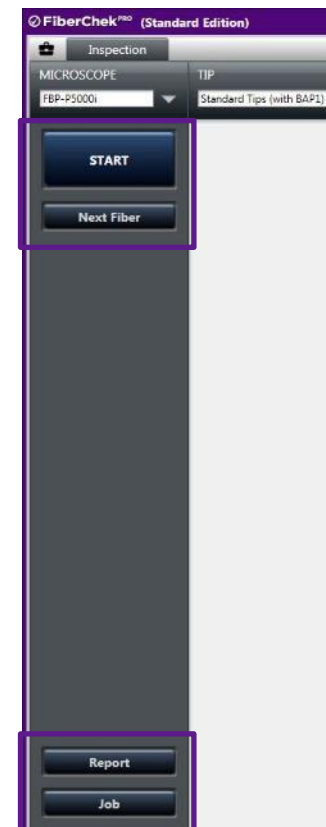
New Functionality to Simplify Collecting Analysis Results



Quick Test
Workflow



Click the icon
to select
desired test
mode



Job
Workflow

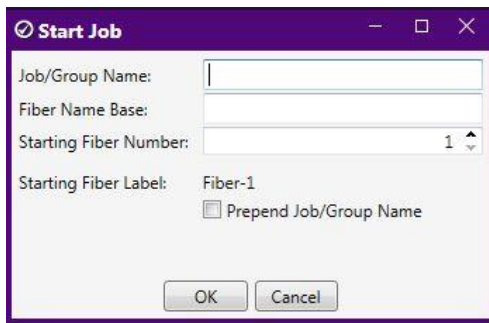
Job Workflow

New Functionality to Simplify Collecting Analysis Results

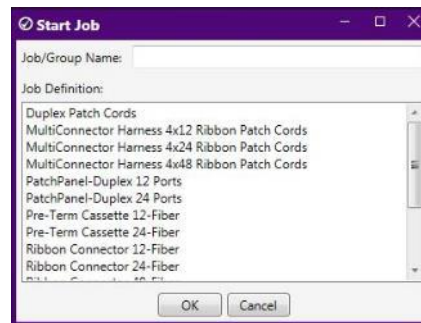
- Start Button Drop-Down Menu
 - New job... starts a new job with no job definition
 - New job from Job Definition... starts a new job from a job definition, depending on the type of fiber being inspected
 - Resume job... allows you to pick up where you left off on a previously-created job
 - Import job... allows you to resume work on a job started on a different machine



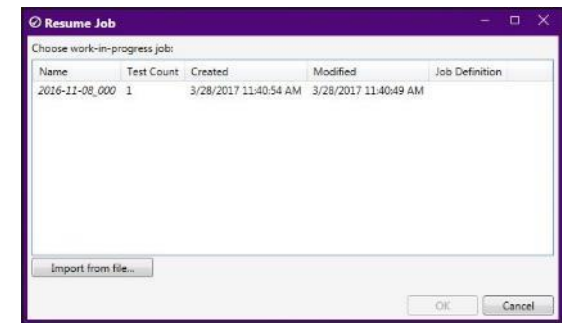
Job Start Menu



New Job Box



New Job from Job Definition Box



Resume Job Box

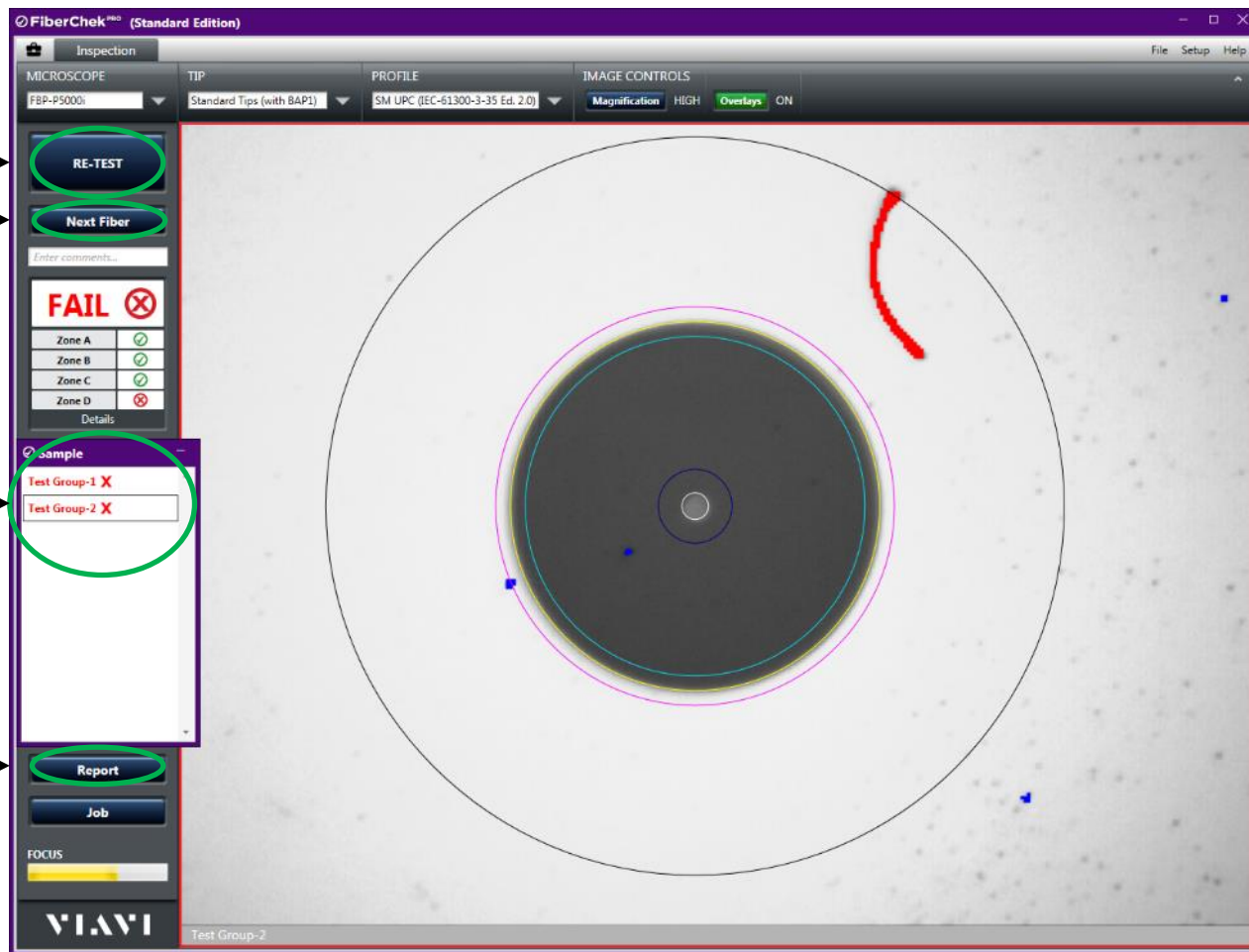
Job Workflow

New Functionality to Simplify Collecting Analysis Results

Re-test current fiber
Move to next fiber

List of all completed tests in current job

Generate report for current job



Job Workflow

New Functionality to Simplify Collecting Analysis Results

