

FiberChekPRO AT&T Feature Pack

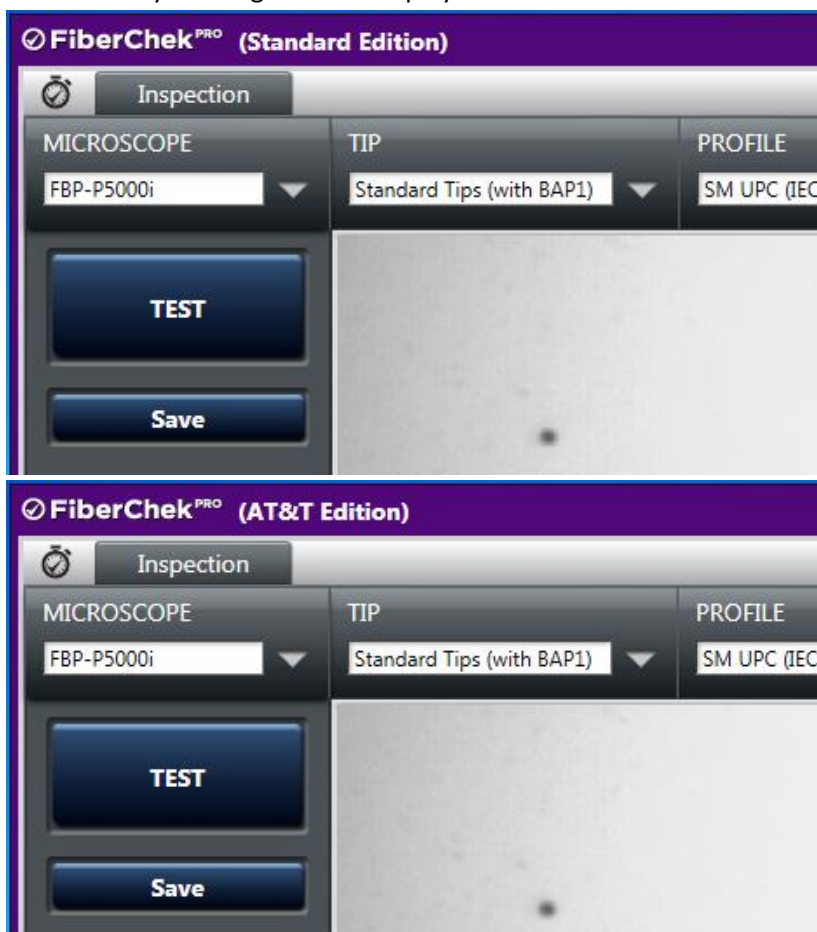
Overview

Beginning with FiberChekPRO version 2.0, the AT&T Edition and Standard Edition may be merged into a single installation with two different runtime modes. Once the AT&T Feature Pack is installed, FiberChekPRO 2.0 (or later) can run in either AT&T mode or Standard mode. The AT&T mode retains the same AT&T-specific reporting features as earlier AT&T Edition installations.

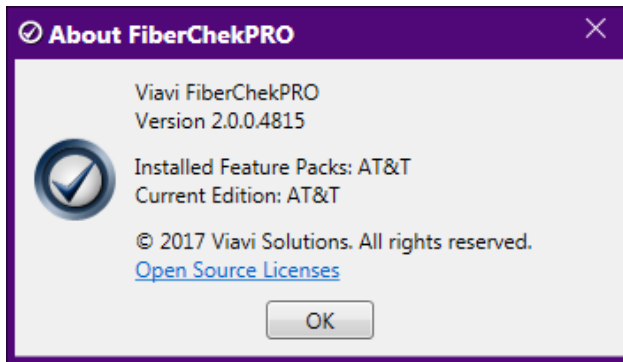
Key Features

Installing the AT&T Feature Pack adds the following features:

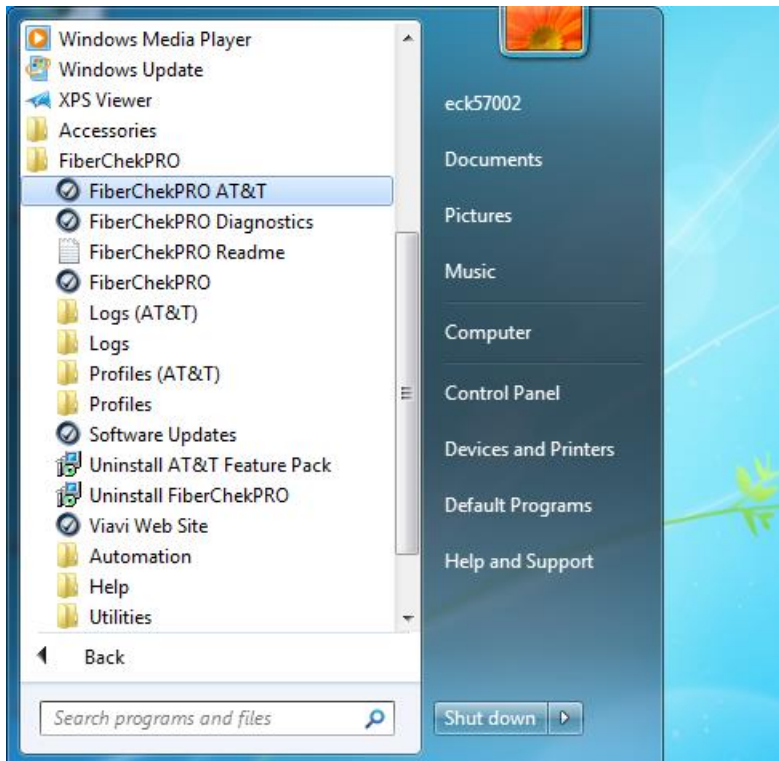
1. The AT&T Feature Pack does not need to be installed again with future software updates. Future software updates will upgrade both AT&T and Standard modes at the same time.
2. The AT&T and Standard modes retain separate user settings, such as reporting options and analysis profiles.
3. The currently running mode is displayed in the window title bar:



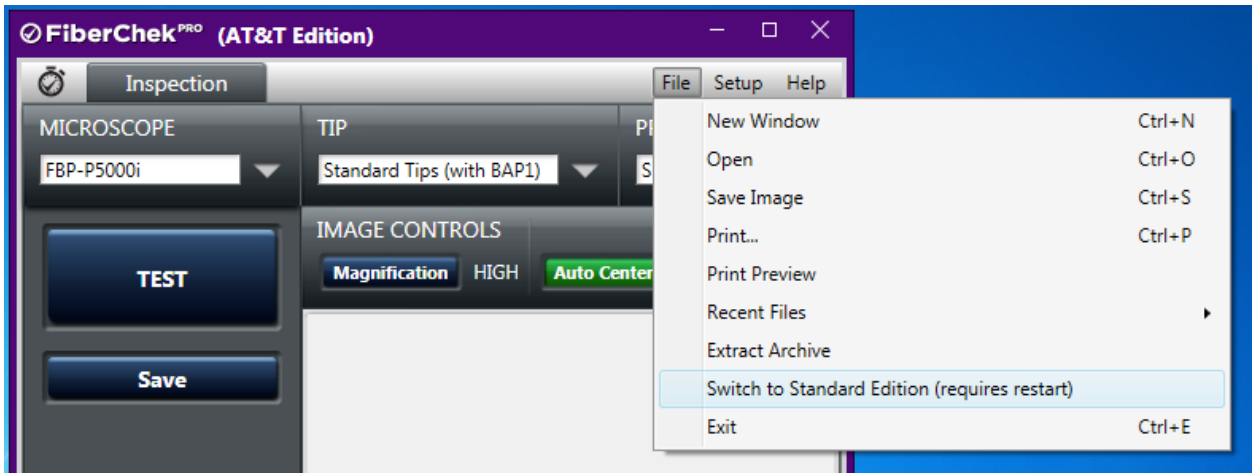
4. The About Box shows that the feature pack is installed and which mode is currently running:



5. Both AT&T and Standard mode shortcuts are shown in the Window Start Menu:



6. In addition to double-clicking on the appropriate shortcut in the Windows Start Menu, users may also switch between AT&T and Standard modes from the FiberChekPRO File menu:



Installing the AT&T Feature Pack

There are several different ways to install the AT&T Feature Pack, depending on whether or not your PC already has a version 1.9 (or earlier) AT&T Edition installation.

A. New Installation

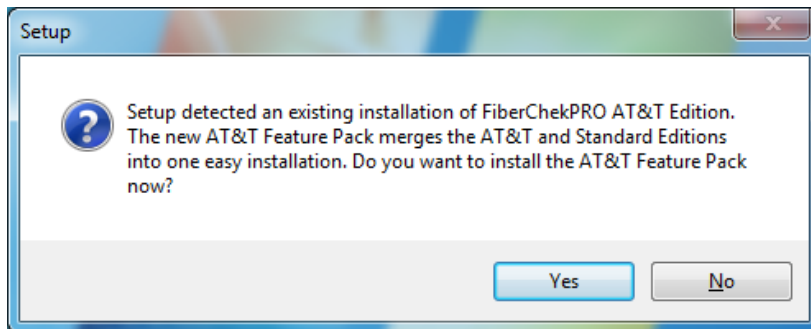
If your PC *does not* already have a version 1.9 or earlier AT&T Edition installation, follow these steps:

1. Download and run the FiberChekPRO 2.0 (or later) installer from Update My Unit (<http://fcpro.updatemyunit.net/>)
2. Download and run the AT&T Feature Pack installer from Update My Unit.

B. Existing AT&T Installation

If your PC already has a version 1.9 (or earlier) AT&T Edition installation, follow these steps:

1. Download and run the FiberChekPRO 2.0 (or later) installer from Update My Unit (<http://fcpro.updatemyunit.net/>)
2. After the main installation completes, the installer will detect that you have an existing AT&T installation and will prompt you to install the AT&T Feature Pack. Click Yes to install it.



Note: If you choose not to install it now, you may still install it later by downloading the feature pack installer from Update My Unit.

3. The installer will prompt you to uninstall the previous AT&T Edition which is now obsolete. It is recommended that you do so now to avoid any confusion that may arise from two separate installations. This will NOT affect any of your data or settings.

