



FiberChek Sidewinder™ MPO Inspection Probe

User Guide

22122621 Rev. 201, Standard

March 2019



Copyright

Copyright 2019 VIAVI Solutions Inc. All rights reserved. VIAVI, FiberChek Sidewinder, FiberChekPRO, and FiberChekMOBILE are trademarks or registered trademarks of VIAVI in the United States and/or other countries. All other trademarks and registered trademarks are the property of their respective owners. No part of this guide may be reproduced or transmitted, electronically or otherwise, without written permission of the publisher.

Every effort was made to ensure that the information in this manual was accurate at the time of printing. However, information is subject to change without notice, and VIAVI reserves the right to provide an addendum to this manual with information not available at the time that this manual was created.

Terms and Conditions

Specifications, terms, and conditions are subject to change without notice. The provision of hardware, services, and/or software are subject to VIAVI standard terms and conditions, available at www.viavisolutions.com/terms.

Warranty

VIAVI warrants this equipment to be free of defects in material and workmanship for one (1) calendar year from the date of purchase. Any mishandling or unauthorized repairs will void this warranty. For additional warranty terms and conditions, see www.viavisolutions.com/terms.

Disclaimer

The foregoing warranties are in lieu of all other warranties and conditions, expressed or implied. VIAVI specifically disclaims all other warranties, either expressed or implied, on any hardware, documentation or services including but not limited to warranties relating to quality, performance, non-infringement, merchantability or fitness for a purpose, as well as those arising from any course of dealing, usage or trade practice. Under no circumstances will VIAVI be liable for any indirect or consequential damages related to breach of this warranty.

California Proposition 65

California Proposition 65, officially known as the Safe Drinking Water and Toxic Enforcement Act of 1986, was enacted in November 1986 with the aim of protecting individuals in the state of California and the state's drinking water and environment from excessive exposure to chemicals known to the state to cause cancer, birth defects or other reproductive harm. For the VIAVI position statement on the use of Proposition 65 chemicals in VIAVI products, see the **Hazardous Substance Control** section of the [VIAVI Policies & Standards](#) web page.

Federal Communications Commission (FCC) Notice

This product was tested and found to comply with the limits for a Class A digital device, pursuant to Part 15 of the FCC Rules.

These limits are designed to provide reasonable protection against harmful interference when the equipment is operated in a commercial environment. This product generates, uses, and can radiate radio frequency energy and, if not installed and used in accordance with the instruction manual, may cause harmful interference to radio communications. Operation of this product in a residential area is likely to cause harmful interference, in which case you will be required to correct the interference at your own expense.

The authority to operate this product is conditioned by the requirements that no modifications be made to the equipment unless the changes or modifications are expressly approved by VIAVI.

Caution: RF Radiation Exposure

- To comply with FCC RF exposure requirements, a separation distance of at least 20 cm must be maintained between the antenna of this device and all persons.
- This transmitter must not be collocated or operating with any other antenna or transmitter.

Industry Canada (IC) requirements

This Class A digital apparatus complies with Canadian ICES-003.

Cet appareil numérique de la classe A est conforme à la norme NMB-003 du Canada.

This device complies with Industry Canada's licence-exempt RSSs. Operation is subject to the following two conditions: 1) This device may not cause interference; and, 2) This device must accept any interference, including interference that may cause undesired operation of the device.

Le présent appareil est conforme aux CNR d'Industrie Canada applicables aux appareils radio exempts de licence. L'exploitation est autorisée aux deux conditions suivantes: 1) l'appareil ne doit pas produire de brouillage; et, 2) l'utilisateur de l'appareil doit accepter tout brouillage radioélectrique subi, même si le brouillage est susceptible d'en compromettre le fonctionnement.

Caution: RF Radiation Exposure

To comply with IC RF exposure requirements, this device and its antenna must not be collocated or operating in conjunction with any other antenna or transmitter.

Pour se conformer aux exigences de conformité RF canadienne l'exposition, cet appareil et son antenne ne doivent pas être co-localisés ou fonctionnant en conjonction avec une autre antenne ou transmetteur.

EU WEEE and Battery Directives

This product, and the batteries used to power the product, should not be disposed of as unsorted municipal waste and should be collected separately and disposed of according to your national regulations.

VIAVI has established a take-back processes in compliance with the EU Waste Electrical and Electronic Equipment (WEEE) Directive, 2012/19/EU, and the EU Battery Directive, 2006/66/EC. Instructions for returning waste equipment and batteries to VIAVI can be found in the [WEEE section of the VIAVI Policies & Standards](#) web page.

If you have questions concerning disposal of your equipment or batteries, contact the VIAVI WEEE Program Management team at WEEE.EMEA@ViaviSolutions.com.

EU REACH

Article 33 of EU REACH regulation (EC) No 1907/2006 requires article suppliers to provide information if a listed Substances of Very High Concern (SVHC) is present in an article above a certain threshold. For information on the presence of REACH SVHCs in VIAVI products, see the **Hazardous Substance Control** section of the [VIAVI Policies & Standards](#) web page.

EU CE Marking Directives (LV, EMC, RoHS, RE)

This product conforms with all applicable CE marking directives. Please request the EU Declaration of Conformity for details.

EU Radio Equipment Directive

In accordance with Article 10.8 of the EU Radio Equipment Directive 2014/53/EU, the following table provides information on the frequency bands and the maximum RF transmit power of this product for sale in the EU:

Frequency Range (MHz)	Channels Used	Max. Transmit Power (dBm)
2400-2483.5	1 - 13	ODFM: 13.5 dBm CCK: 17.25 dBm DSSS: 17 dBm

China RoHS materials declaration

“中国 RoHS”

《电子信息产品污染控制管理办法》（信息产业部，第 39 号）

附录 (Additional Information required for the Chinese Market only)

本附录按照“中国 RoHS”的要求说明了有关电子信息产品环保使用期限的情况，并列出了产品中含有的有毒、有害物质的种类和所在部件。本附录适用于产品主体和所有配件。

产品系列: FIBERCHEK SIDEWINDER MPO INSPECTION PROBE
(Product Family)

环保使用期限:



本标识标注于产品主体之上，表明该产品或其配件含有有毒、有害物质（详情见下表）。

其中的数字代表在正常操作条件下至少在产品生产日期之后数年内该产品或其配件内含有的有毒、有害物质不会变异或泄漏。该期限不适用于诸如电池等易耗品。

有关正常操作条件，请参见产品用户手册。

产品生产日期请参见产品的原始校准证书。

有毒、有害物质的类型和所在部件

元器件 (Component)	有毒、有害物质和元素					
	铅(Pb)	汞 (Hg)	镉(Cd)	六价铬 (CR ⁶⁺)	多溴联苯 (PBB)	多溴二苯醚 (PBDE)
产品主体 (Main Product)						
印刷电路板组件 (PCB Assemblies)	X	O	O	O	O	O
内部配线 (Internal wiring)	X	O	O	O	O	O
显示器 (Display)	X	O	O	O	O	O
键盘 (Keyboard)	O	O	O	O	O	O
电池 (Batteries)	O	O	O	O	O	O
电源 (Power Supply)	X	O	O	O	O	O
c 电工零件 (Electro-mechanical parts)	X	O	O	O	O	O
硬盘 (Hard Drive)	O	O	O	O	O	O
光模块 / 辅助模块 (Optical modules) / (Auxiliary modules)	X	O	O	O	O	O
金属外壳零件和紧固件 (Metal case parts and fixings)	X	O	O	O	O	O
塑料外壳零件 (Plastic case parts)	O	O	O	O	O	O
标签和胶带 (Labels and tapes)	O	O	O	O	O	O
配件 (Accessories)						
外接电缆和适配器 (External cables and adapters)	X	O	O	O	O	O
CD ROMS						
手册和其它印刷材料 (Handbooks and other printed material)	O	O	O	O	O	O
包装箱和绑带 (Carrying case and strap)	O	O	O	O	O	O
其它配件 (Other accessories)	O	O	O	O	O	O

本表是按照 S / T 11364 的规定编制的:

O: 表示该有害物质在该部件所有均质材料中的含量均在 GB/T 26572 规定的限量要求以下。

X: 表示该有害物质至少在该部件的某一均质材料中的含量超出 GB/T 26572 规定的限量要求。

Contents

1	Introduction	1-1
	Ordering information.....	1-2
	Technical Assistance Center and Knowledge Base	1-2
2	Getting started	2-1
	Controls and interfaces.....	2-2
	Using the touchscreen	2-3
	Navigating the SETTINGS menu	2-3
	Panning in Live view	2-4
	Calibrating the touchscreen	2-5
	USB and WiFi connectivity.....	2-6
	Enabling WiFi capability	2-6
	Storage capacity	2-7
3	Installing tips for fiber inspection.....	3-1
	Tips for multi-fiber inspection	3-2
	Installing a tip for multi-fiber inspection.....	3-2
	Key orientation	3-3
	Installing a long-reach tip	3-4
	Installing a tip for simplex-fiber inspection	3-5
4	Inspecting fiber optic cables	4-1
	Setting up Pass/Fail analysis for multi-fiber connectors.....	4-2
	Editing the active optical setting	4-3
	Editing the active optical setting.....	4-3
	Performing Pass/Fail analysis	4-5
	Working with groups	4-7
	Creating a new group	4-7
	Closing the active group.....	4-7
5	Using the FiberChek Sidewinder probe with the FiberChekPRO inspection software.....	5-1
	Connecting to FiberChekPRO inspection software.....	5-2
	Connecting over WiFi	5-3
	Managing optical settings.....	5-4
	Generating reports	5-6
	Performing a Pass/Fail analysis using the FiberChekPRO inspection software.....	5-6
	Importing data	5-8
	Updating the firmware	5-9
	Performing a system reset.....	5-12
6	Using the FiberChek Sidewinder probe with the FiberChekMOBILE app	6-1
	Connecting to the FiberChekMOBILE app	6-2

Connecting to the FiberChekMOBILE app over WiFi.....	6-2
Generating reports using the FiberChekMOBILE app.....	6-3
Sending a report by email.....	6-6
Connector Setup	A-2
Create New Group	A-2
User Info	A-2
Recall Image.....	A-2
Edit Optical Settings.....	A-3
Microscope Settings	A-3
Radio Settings	A-3
System Settings.....	A-3



About this guide

This guide provides information about the FiberChek Sidewinder™ MPO Inspection Probe.

Revision history

Revision	Date	Details
201	March 2019	<ul style="list-style-type: none">• Changed document type from Quick Start Guide to User Guide• Updated to reflect firmware release 2.0.1776.3236• Expanded coverage of how to get started with the FiberChek Sidewinder probe• Added new menu commands reference• Added information about FCPT tips for angled connectors• Added procedure for installing long-reach tips• Added storage capacity matrix for common ribbon geometries• Added procedure for creating and editing optical settings• Added procedures for using the FiberChekPRO™ inspection software and the FiberChekMOBILE™ app• Added information about the VIAVI position statement on California Proposition 65
200	January 2018	This document is released.

To access the latest version of this user guide, go to:

http://fcpro.updatemyunit.net/archives/FCPRO/User_Guide_Sidewinder.pdf

1 Introduction

Inspection of fiber optic interconnects is essential for the optimal performance and longevity of fiber optic networks. Every time they are handled, fiber connectors must be inspected to ensure no debris or damage is present. VIAVI has made this critical task easier than ever with the FiberChek Sidewinder™ MPO Inspection Probe. The FiberChek Sidewinder probe provides standalone operation, a color touchscreen display, and WiFi connectivity to allow fast, reliable maintenance of optical connector quality.



This section covers the following information:

- “Ordering information” on page 1-2
- “Technical Assistance Center and Knowledge Base” on page 1-2

For product specifications and how-to videos, go to www.viavisolutions.com/sidewinder.

Ordering information

Table 1-1: FiberChek Sidewinder kits and accessories

Description	Part Number
Kitted packages	
Kit: FiberChek Sidewinder probe – WiFi Case, FCPP-OLA-1, FCPT-UFBPT, FBPP-BAP1, tip case	FIT-FCSW-KIT1
Kit: FiberChek Sidewinder probe – No WiFi Case, FCPP-OLA-1, FCPT-UFBPT, FBPP-BAP1, tip case	FIT-FCSW-KIT1-NW
Kit: FiberChek Sidewinder probe – WiFi Case, FCPP-OLA-1, FCPT-MTP, FCPT-MTPA, FCPT-UFBPT, FBPP-BAP1, tip case	FIT-FCSW-KIT2
Kit: FiberChek Sidewinder probe – WiFi Case, FCPP-OLA-1, FCPT-MTP, FCPT-MTPA, FCPT-UFBPT, FBPP-BAP1, simplex tips for LC/PC and SC/PC, tip case	FIT-FCSW-KIT2-S
Accessories	
Tip, MTP® Bulkhead, for FiberChek Sidewinder	FCPT-MTP
Tip, MTP APC Bulkhead, for FiberChek Sidewinder	FCPT-MTPA
Objective Lens Assembly, for FiberChek Sidewinder	FCPP-OLA-1
Adapter, FBP Probe Interface, for FiberChek Sidewinder	FCPT-UFBPT
Carrying Case, for FiberChek Sidewinder	FCPP-SCASE4
Replacement Dust Cap for FiberChek Sidewinder	FCPP-RDC1
Tip and Adapter Case, clear plastic	FBPP-GC-6

Technical Assistance Center and Knowledge Base

To find the Technical Assistance Center phone number and email in your region for the Sidewinder product or to search the VIAVI Solutions Knowledge Base, visit the VIAVI Solutions Technical & Product Support site at support.viavisolutions.com.



2 Getting started

This section covers the following information:

- [“Controls and interfaces” on page 2-2](#)
- [“Using the touchscreen” on page 2-3](#)
- [“Panning in Live view” on page 2-4](#)
- [“Calibrating the touchscreen” on page 2-5](#)
- [“USB and WiFi connectivity” on page 2-6](#)
- [“Storage capacity” on page 2-7](#)

Controls and interfaces

Figure 2-1: FiberChek Sidewinder probe controls and interfaces (front and rear views)

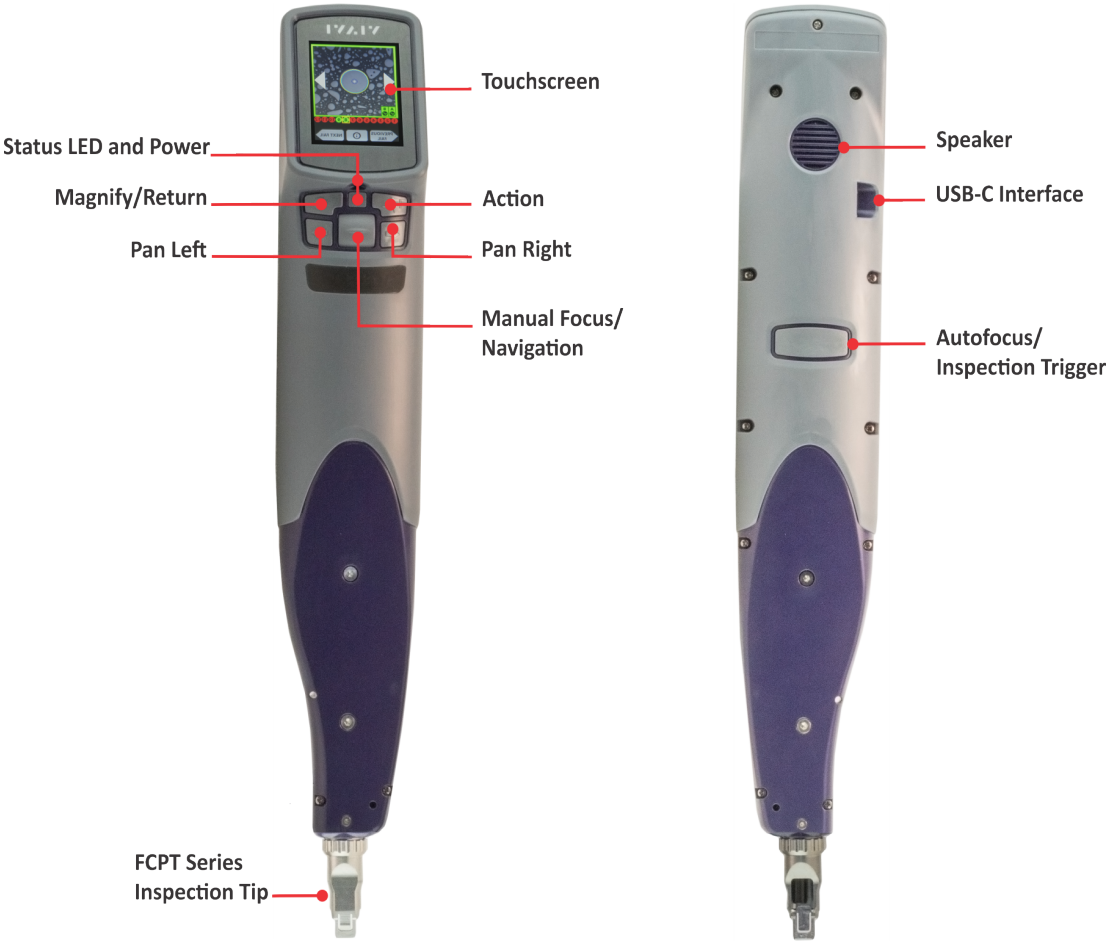


Table 2-1: FiberChek Sidewinder probe LED states

State	Description	
	While probe is not connected to a power source	While probe is connected to a power source
Off	Probe is powered off	
Green	Battery power is higher than 20%	Battery is fully charged
Amber	Probe is powering on	Battery is charging
Red	Battery power is low	

Using the touchscreen

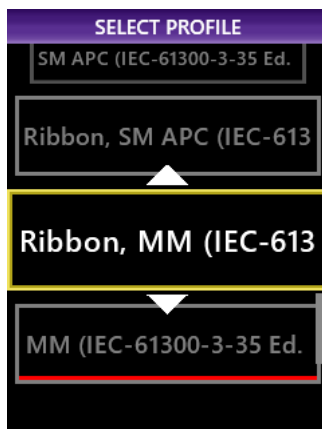
The **SETTINGS** menu on the touchscreen is available in the Live view. To access the menu, tap the touchscreen. While an analysis result or still image is displayed on the touchscreen, you can return to the Live view by pressing and holding the **Autofocus/Inspection Trigger** button.

For information about functions available on the **SETTINGS** menu, see [“SETTINGS menu groups” on page A-1](#).

Navigating the SETTINGS menu

Step 1 Using the **Manual Focus/Navigation** control, scroll up or down to a menu item.

Selected menu items have a yellow border. Enabled menu items have a red underline.



Note: You can also use the touchscreen to scroll through the menu. Tap any item above or below the selected menu item to scroll in that direction by one item.

Step 2 Press the **Action** button or tap the enabled menu item to confirm a selection or view additional options. You can also use the **Pan Right** and **Pan Left** buttons to access or exit menu groups.

A Busy icon displays during operations that take time to complete.



Step 3 Press the **Magnify/Return** button or the **Pan Left** button to return to the previous screen.

Pressing the **Magnify/Return** button while the top-level menu is displayed will return to the Live view.

To exit from the view of a recalled image, do any of the following:

- Select the **Action** button or the **Autofocus/Inspection Trigger** button in rotated screen mode. See [“Screen Orientation” on page A-4](#).
- Press the **Magnify/Return** button or the **Autofocus/Inspection Trigger** in unrotated screen mode. See [“Recall Image” on page A-2](#).

Step 4 Press the **Autofocus/Inspection Trigger** button at any time to return to the Live view.

— End —

Panning in Live view

After you connect a fiber cable to the FiberChek Sidewinder probe, a live image of the cable end appears on the touchscreen. When a ribbon cable is connected to the probe, clicking the **Pan Left** or **Pan Right** button provides a live view of each fiber end in the cable as the probe's microscope moves in the panning direction.

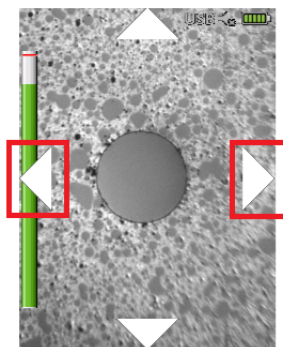
Figure 2-2: Physical panning in Live view



Note: Physical panning is not available when a simplex cable is connected to the FiberChek Sidewinder probe.

When a high-magnification live view of a fiber end is displayed on the touchscreen, you can use the left and right arrows on the touchscreen to digitally pan the immediate area around a fiber end.

Figure 2-3: Digital panning in a high-magnification live view



Note: For ribbon cable, the panning range is limited to the fiber end to the left or right of the magnified fiber end.

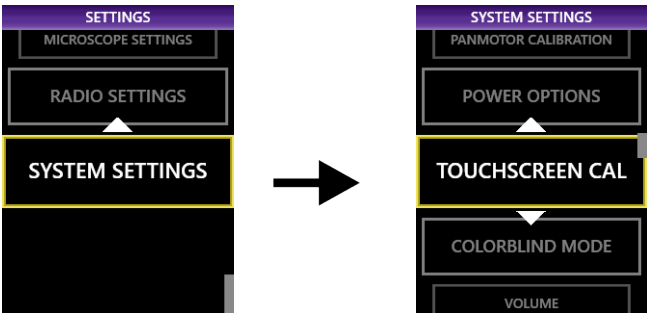
Calibrating the touchscreen

If the touchscreen controls, including keyboard keys and menu options, of the FiberChek Sidewinder probe do not respond as expected when selected, you can calibrate the touchscreen to adjust the active area.

Notes:

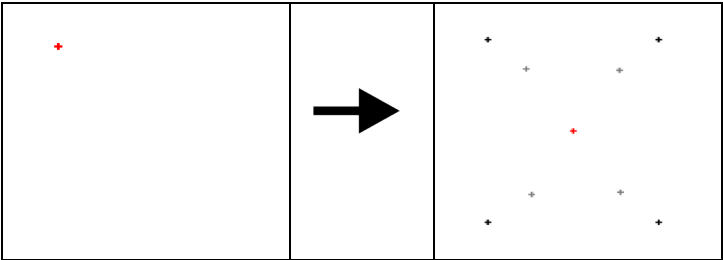
- Calibration adjusts only the active areas of the touchscreen, not the amount of pressure required to select controls.
- Use a blunt object, such as a stylus for tablets, to perform this procedure.

Step 1 On the **SETTINGS** menu, select **SYSTEM SETTINGS > TOUCHSCREEN CAL**, and then press the **Action** button.



The Touchscreen Calibration view appears. The view consists of white background with a small, red marker in the top corner.

Step 2 Using a stylus, tap the marker to reveal an additional marker in another area of the touchscreen, and repeat until a red marker appears in the center.



Step 3 Press the red marker in the center of the touchscreen to view the results of the calibration.

Calibration passed	Calibration failed
<div><div>PASS</div><div>DONE</div></div>	<div><div>FAIL</div><div>RETRY</div></div>

Note: You can cancel the touchscreen calibration procedure at any time by pressing the **Magnify/Return** button. The calibration settings from the last successful touchscreen calibration are retained.

— End —

USB and WiFi connectivity

You can connect the FiberChek Sidewinder probe to a computer via either a USB or WiFi connection and use it with the FiberChekPRO™ inspection software. You can also connect the probe to a mobile device for use with the FiberChekMOBILE™ app over a WiFi connection.

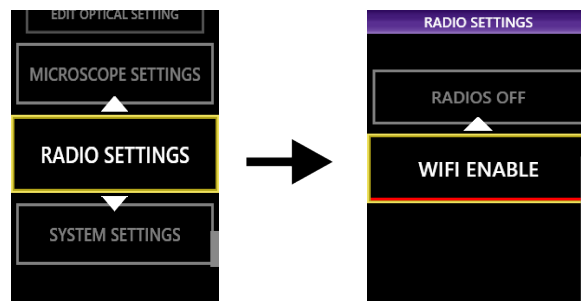
For more information, see the following sections:

- [“Using the FiberChek Sidewinder probe with the FiberChekPRO inspection software” on page 5-1.](#)
- [“Using the FiberChek Sidewinder probe with the FiberChekMOBILE app” on page 6-1.](#)

Enabling WiFi capability

To allow the FiberChek Sidewinder probe to connect with the FiberChekPRO inspection software or the FiberChekMOBILE app over WiFi, you must enable WiFi access on the probe.

On the **SETTINGS** menu, select **RADIO SETTINGS > WIFI ENABLE**, and then press the **Action** button.



Note: Only FiberChek Sidewinder probes with WiFi capability support WiFi access. For information, see [“Ordering information” on page 1-2.](#)

Storage capacity

The FiberChek Sidewinder probe can store up to 2000 fiber-end analysis results. The number of reports that can be stored depends on the number of fiber ends tested.

Table 2-2: Examples of test storage limits for common ribbon configurations

Geometry	Number of Test Reports
8x1	280
12x1	166
12x2	83
16x1	128
16x2	62

To ensure that test results are retained for your records, VIAVI recommends regularly transferring test results to a computer. See [“Importing data” on page 5-8](#) for information.



3 Installing tips for fiber inspection

This section covers the following information:

- [“Tips for multi-fiber inspection” on page 3-2](#)
- [“Key orientation” on page 3-3](#)
- [“Installing a long-reach tip” on page 3-4](#)
- [“Installing a tip for simplex-fiber inspection” on page 3-5](#)

Tips for multi-fiber inspection

The FiberChek Sidewinder probe ships with the FCPP-OLA-1 Lens Assembly attached to it. This is the required lens assembly for all standard FCPT Series multi-fiber tips used with the probe; however, some tips require a different lens assembly. See the [VIAVI Solutions Fiber Tips and Adapters Selection Guide](#) for information.

Figure 3-1: FCPP-OLA-1 optical lens assembly



The FiberChek Sidewinder probe uses FCPT Series tips for flat or angled connectors (FCPT-MTP or FCPT-MTPA, respectively). These are purpose-built for the probe and must be installed correctly to ensure that the fibers in an array are properly enumerated.

Installing a tip for multi-fiber inspection

- Step 1 On the **SETTINGS** menu, select **CONNECTOR TYPE**, and then select a ribbon profile, connector type, and optical setting. See [“Setting up Pass/Fail analysis for multi-fiber connectors” on page 4-2](#) for information.
- Step 2 Power off the FiberChek Sidewinder probe.
- Step 3 Attach the appropriate tip (FCPT-MTP or FCPT-MTPA) to the lens assembly, ensuring that the key is correctly oriented (see [“Key orientation” on page 3-3](#)).
- Step 4 Power on the FiberChek Sidewinder probe.

Important: Always store unused tips, adapters, and lens assemblies in dust proof containers.

Note: For more information, see [“Installing a long-reach tip” on page 3-4](#) or [“Installing a tip for simplex-fiber inspection” on page 3-5](#).

— End —

Key orientation

The Key Up side of the FCPT tip has a cutout and an alignment key. The Key Down side has a tab cutout. The default orientation of the tip is Key Up. To ensure proper fiber enumeration, set the tip so that when you hold the FiberChek Sidewinder probe with the touchscreen facing you, the Key Up side of the tip also faces you.

Figure 3-2: FCPT-MTP tip key orientations for flat connectors

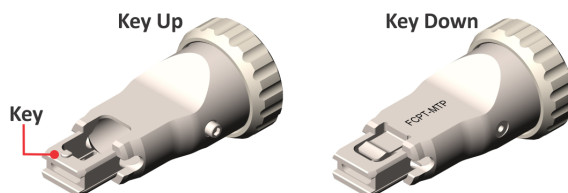
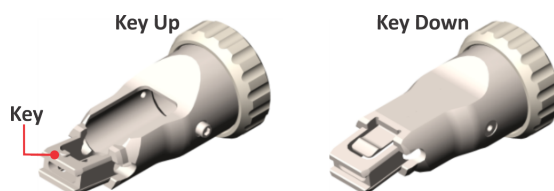
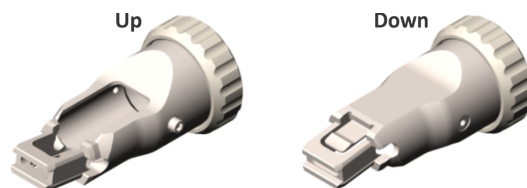


Figure 3-3: FCPT-MTPA tip key orientations for angled connectors



An FCPT tip without an alignment key (FCPT-MTPA-1) is also available for angled connectors. The default orientation for this tip is with the Up side set so that when you hold the FiberChek Sidewinder probe with the touchscreen facing you, the Up side of the tip also faces you.

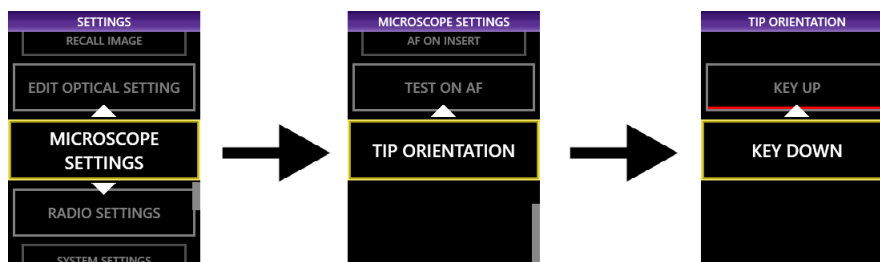
Figure 3-4: FCPT-MTPA-1 tip orientation for angled connectors



Changing key orientation

If you are using a tip with a Key Down orientation, you must change the tip-orientation setting on the FiberChek Sidewinder probe.

- Step 1 On the **SETTINGS** menu, select **MICROSCOPE SETTINGS > TIP ORIENTATION**, and then select and enable **KEY DOWN**.



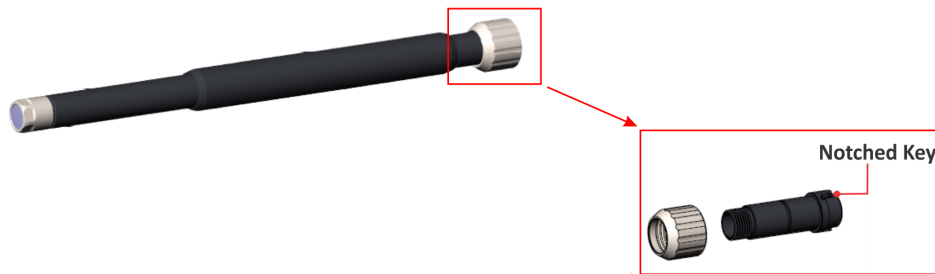
- Step 2 Press the **Magnify/Return** button to exit the menu, or press and hold the **Autofocus/Inspection Trigger** button to return to Live view.

— End —

Installing a long-reach tip

Important: Always store unused tips, adapters, and lens assemblies in dust-proof containers.

- Step 1 Power off the FiberChek Sidewinder probe.
- Step 2 Remove the collar securing the installed tip.
- Step 3 Remove the tip, and store it in a dust-proof container.
- Step 4 Remove the inner optical lens collar from the base of the FCPP-OLA-1 optical lens tube.
- Step 5 Remove the FCPP-OLA-1 optical lens, and store it in a dust-proof container.
- Step 6 Insert the FCPP-OLA-2 optical lens assembly, and secure it using the collar provided.



Note: Ensure that the notched key is lined up before tightening the collar.

- Step 7 Attach either the FCPT-MTP-L (MTP/MPO, MM) or the FCPT-MTPA-L (MTP/MPO, SM) long-reach tip.



- Step 8 Reattach the collar removed in [Step 2](#).
- Step 9 Power on the FiberChek Sidewinder probe.

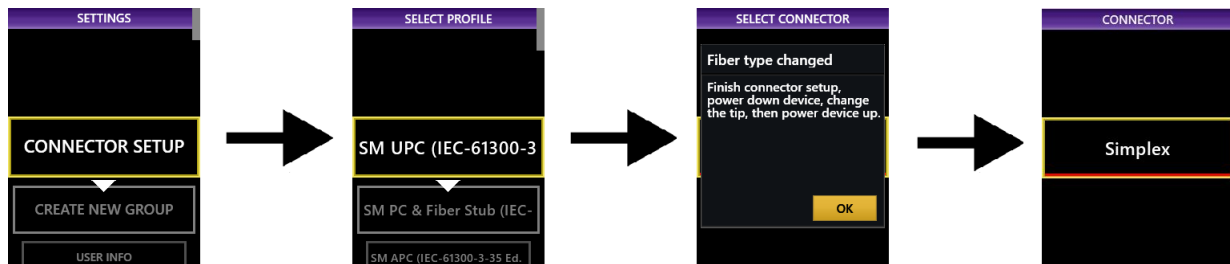
— End —

Installing a tip for simplex-fiber inspection

You can use the FiberChek Sidewinder probe to inspect and analyze simplex fibers. To configure the FiberChek Sidewinder probe for simplex-fiber inspection, specify connector settings, and then replace the FCPP-OLA-1 lens assembly on the probe with the FCPT-UFBPT assembly.

Important: Always store unused tips, adapters, and lens assemblies in dust-proof containers.

Step 1 On the **SETTINGS** menu, select **CONNECTOR SETUP**, select the profile for the type of simplex fiber you want to inspect, and then press the **Action** button to select **Simplex**.



Step 2 Select the tip setting.

Note: For information about tip settings, refer to the *FiberChekPRO™ User Manual*, ZP-PKG-0576, which you can access from the FiberChekPRO **Help** menu

Step 3 Power off the FiberChek Sidewinder probe.

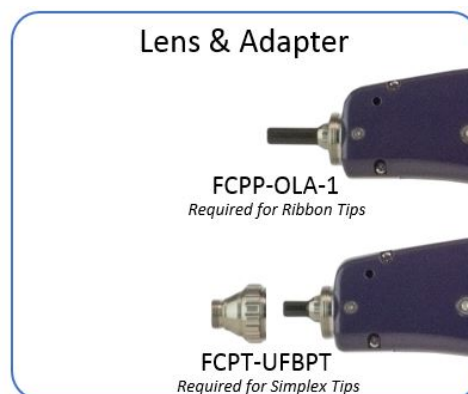
Step 4 Remove the FCPT tip on the probe, and store it in a dust-proof container.

Step 5 Carefully unscrew the FCPP-OLA-1 lens assembly to remove it, and store it in a dust-proof container.

Important: Do not to touch the lens on the front of the FCPP-OLA-1.

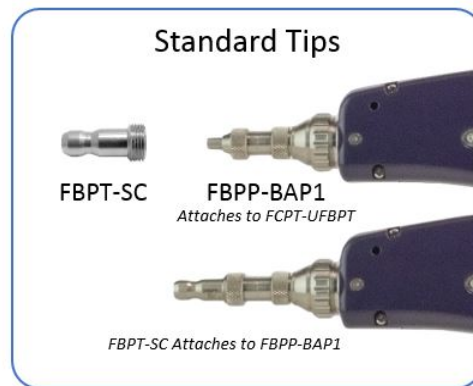
Step 6 Attach the FCPT-UFBPT assembly:

- a. Install the short hollow tube on the inside-front of the probe, threading it using the narrow collar included with the assembly.
- b. Attach the larger metal body of the FCPT-UFBPT to the outside-front of the probe using the larger collar.



Step 7 Attach the simplex tip or barrel:

- a. If you are using a hollow tip that requires an FBPP-BAP1 barrel assembly, attach the FBPP-BAP1 to FCPT-UFBPT.



- b. If you are using a tip that contains its own optics, you can attach it directly to the FCPT-UFBPT without a barrel assembly.



Note: Not all FBPT tips are compatible with the FiberChek Sidewinder probe. For information, contact VIAVI Support.

**CAUTION**

Do not power on the FiberChek Sidewinder probe with the FCPT-UFBPT assembly attached unless you are certain that you have configured the probe for simplex inspection. When the probe is not properly configured for simplex inspection, the x-axis motor will grind against the constraints of the FCPT-UFBPT, potentially damaging the motor.

Step 8 Power on the FiberChek Sidewinder probe.

— End —



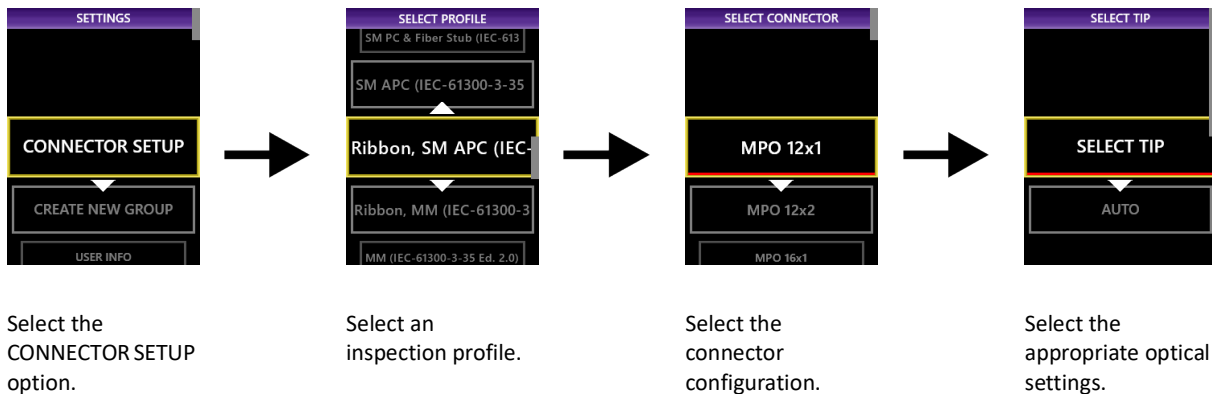
4 Inspecting fiber optic cables

This section covers the following information:

- [“Setting up Pass/Fail analysis for multi-fiber connectors” on page 4-2](#)
- [“Editing the active optical setting” on page 4-3](#)
- [“Performing Pass/Fail analysis” on page 4-5](#)
- [“Working with groups” on page 4-7](#)

Setting up Pass/Fail analysis for multi-fiber connectors

- Step 1 Ensure that the FiberChek Sidewinder probe is configured with the FCPP-OLA-1 lens assembly and an FCPT tip as described in [“Installing tips for fiber inspection” on page 3-1](#).
- Step 2 On the **SETTINGS** menu, select **CONNECTOR SETUP**, and then select a ribbon profile, connector type, and optical settings:



Note: If you select **AUTO**, the probe applies tip size and brightness settings for you.



Select the appropriate tip. This screen applies if you chose **SELECT TIP** in the previous step.

- Step 3 Exit the menu by pressing and holding the **Autofocus/Inspection Trigger** button.

— End —

Editing the active optical setting

Different manufacturers of MPO connectors use different ferrule materials and polishing processes. Because of this, MPO connectors can appear very different from one another.

The FiberChek Sidewinder probe is pre-loaded with an optical setting suitable for most MPO connectors. However, you can edit the active optical setting to suit a particular MPO connector.

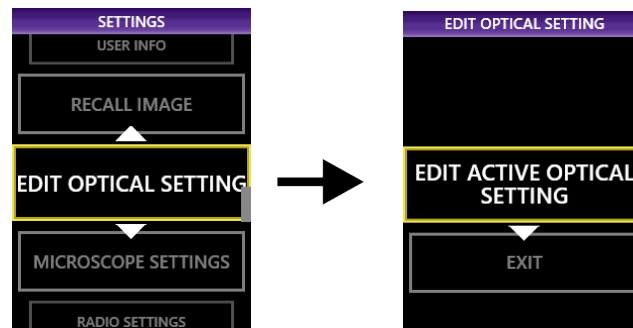
Note: You can use the touchscreen to only edit the active optical setting. If you want to create, save, or modify multiple custom optical settings, use the FiberChekPRO inspection software. See [“Managing optical settings” on page 5-4](#).

Editing the active optical setting

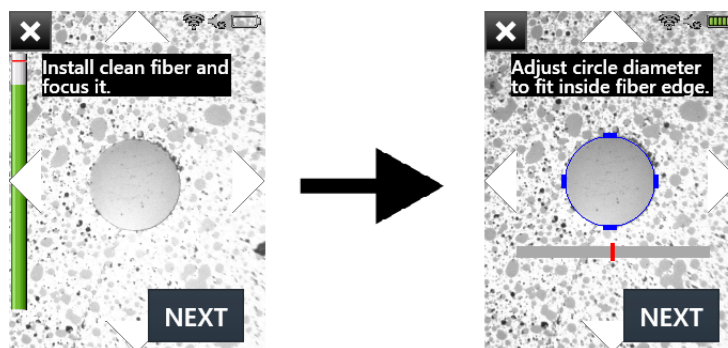
Step 1 Connect a cleaned fiber cable to the FiberChek Sidewinder probe and bring it into focus.

Note: For best results, pan to the leftmost fiber. See [“Panning in Live view” on page 2-4](#) for information.

Step 2 On the **SETTINGS** menu, select **EDIT OPTICAL SETTING** > **EDIT ACTIVE OPTICAL SETTING**.



Step 3 Click **NEXT**.



The probe will locate a fiber in the array and display a blue circle around its circumference.

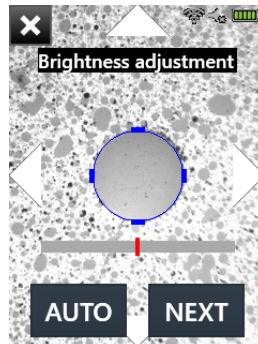
Step 4 Adjust the circle until it is just inside the fiber edge.

- To make the circle larger, press the **Manual Focus/Navigation** button up or move the on-screen slider to the right.
- To make the circle smaller, press the **Manual Focus/Navigation** button down or move the on-screen slider to the left.

Step 5 When the blue circle is aligned, select **NEXT**.

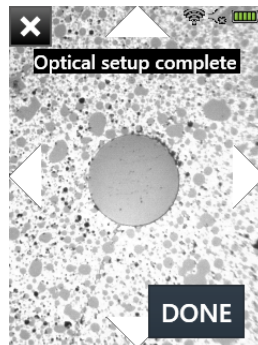
Step 6 Adjust the lighting level for optimum performance:

- To perform an automated lighting adjustment/calibration, select **AUTO**.



- To make the lighting brighter, press the **Manual Focus/Navigation** button up or move the on-screen slider to the right.
- To make the lighting less bright, press the **Manual Focus/Navigation** button down or move the on-screen slider to the left.

Step 7 Select **DONE** when finished.



Note: You can discard your changes at any time by selecting the **X** icon at the top of the screen.

— End —

Performing Pass/Fail analysis

Step 1 Connect a cleaned fiber cable to the FiberChek Sidewinder probe.

Step 2 Set the FiberChek Sidewinder probe to Live view.

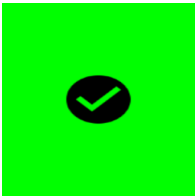

Step 3 Press and hold the **Autofocus/Inspection Trigger** button for one second.

You can also select the circle button on an autofocused image. Hold the probe steady in the bulkhead. The probe will automatically focus and test all fibers in the array.

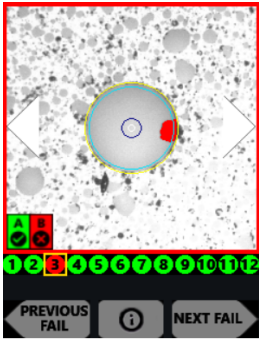
Notes:

- To manually focus and test, use the **Manual Focus/Navigation button** to adjust the focus, and then press the **Action** button to run the analysis.
- You can stop a test by pressing the trigger again for one second

When the analysis is completed, a pass or fail message briefly appears on the touchscreen before the Analysis Result view appears. If sounds are enabled, an audio tone indicates whether the result is a PASS (double chime) or a FAIL (long buzzer).

Connector passed	Connector failed
	

Step 4 Review the results.

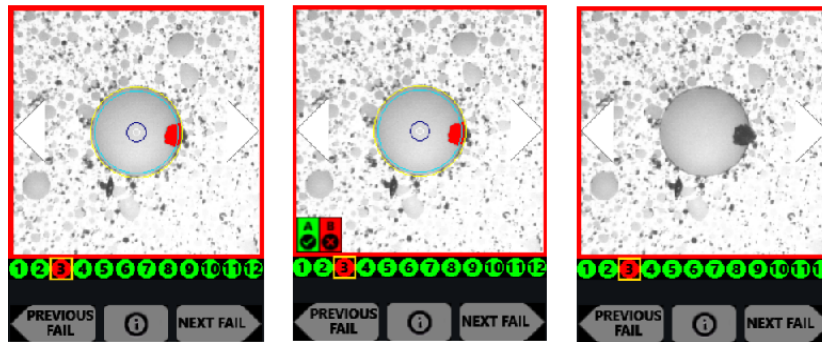


To view an adjacent fiber, use the on-screen arrows or press the **Pan Right** or **Pan Left** button on the FiberChek Sidewinder probe. To view only fibers that failed the analysis, select **NEXT FAIL** or **PREVIOUS FAIL** on the touchscreen.

Note: Results are for the entire connector. If one or more fibers fail, the entire connector is recorded as a FAIL. To achieve a PASS result, each fiber must pass.

Step 5 Optionally, tap the touchscreen to change or remove the overlay mode applied to the image of the fiber end. The following overlay modes are available:

- Show Overlay
- Show Overlay + Zone Pass/Fail Table
- No Overlay



Step 6 Optionally, press the **Action** button to save the inspection report to the probe, using the active group if set up. See [“Working with groups” on page 4-7](#).

Note: You can transfer saved reports to a computer. For information, see [“Importing data” on page 5-8](#).

Step 7 Optionally, press and hold the **Autofocus/Inspection Trigger** button to return to the Live view.

— End —

Working with groups

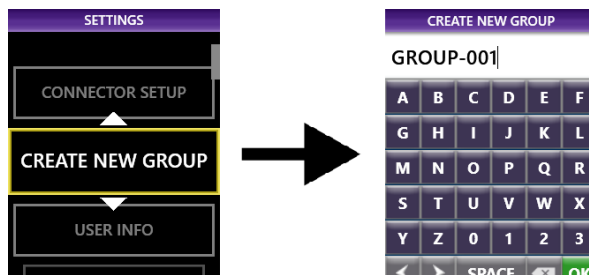
Groups help you organize and manage the results of Pass/Fail analysis tests.

Creating a new group

Step 1 On the **SETTINGS** menu, select **CREATE NEW GROUP**, and then press the **Action** button.

Step 2 Type the name of the group using the on-screen keyboard.

To ensure that results and images are added to the new group, give it a unique name. If you use the same name as an existing group, results and images will be added to that group instead of the new group.



Note: The group number will auto-increment.

Step 3 Select **OK**, or press the **Action** button to create the group and set it as the active group.

The **CLOSE GROUP** menu item appears.

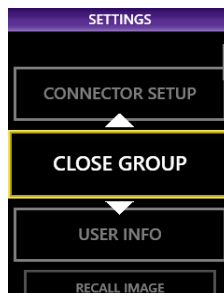
Step 4 Press and hold the **Autofocus/Inspection Trigger** button to return to the Live view.

— End —

Closing the active group

Closing the active group enables the FiberChek Sidewinder probe to save analysis results or still images without adding them to a group.

Step 1 On the **SETTINGS** menu, select **CLOSE GROUP**, and then press the **Action** button.



Step 2 Return to the Live view by pressing and holding the **Autofocus/Inspection Trigger** button, or by pressing the **Magnify/Return** button twice.

— End —



5 Using the FiberChek Sidewinder probe with the FiberChekPRO inspection software

This section covers the following information:

- [“Connecting to FiberChekPRO inspection software” on page 5-2](#)
- [“Managing optical settings” on page 5-4](#)
- [“Generating reports” on page 5-6](#)
- [“Importing data” on page 5-8](#)
- [“Updating the firmware” on page 5-9](#)
- [“Performing a system reset” on page 5-12](#)

Connecting to FiberChekPRO inspection software

FiberChekPRO inspection software lets you use a computer to access a FiberChek Sidewinder probe over either a USB or WiFi connection. You can then perform Pass/Fail analysis tests, view test results, generate fiber inspection reports, update the probe's firmware, or perform a system reset if required.

Note: All FiberChek Sidewinder probes support USB access; however, only FiberChek Sidewinder probes with WiFi capability support WiFi access (see [“Ordering information” on page 1-2](#)).

You can download the FiberChekPRO inspection software from <http://fcpro.updatemyunit.net/> and install it on multiple computers at no additional cost.

Note: For detailed information about the features and navigation tools of the inspection software, refer to the *FiberChekPRO User Manual*, ZP-PKG-0576, which you can access from the FiberChekPRO **Help** menu.

Connecting over USB

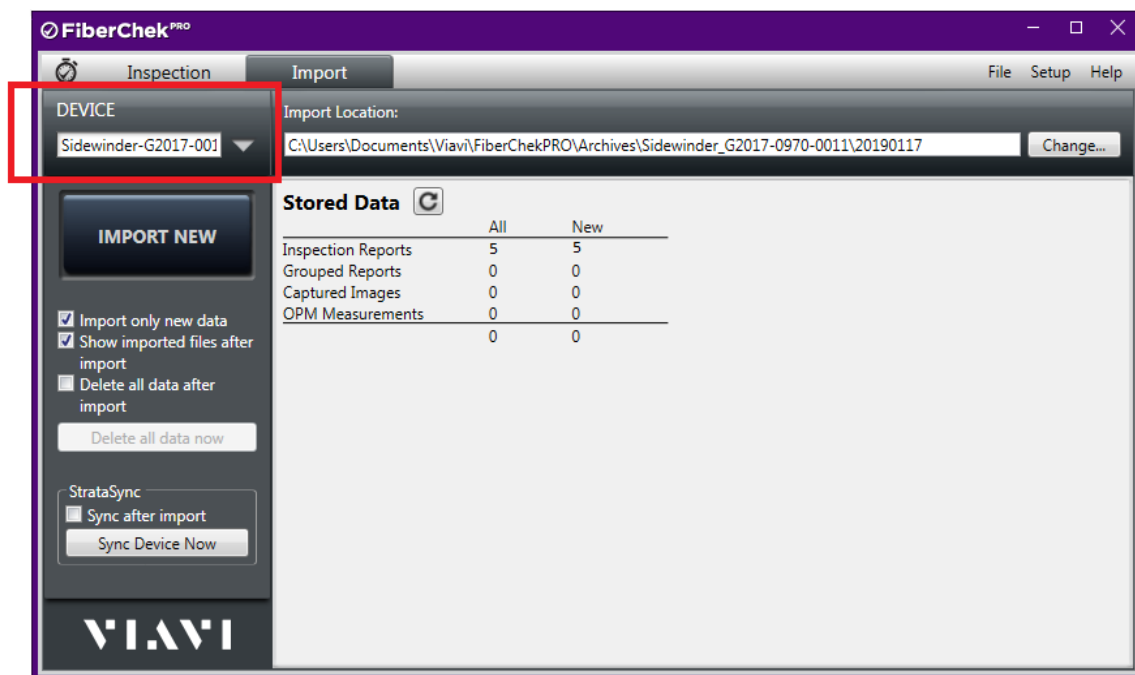
Step 1 Start the FiberChekPRO inspection software.



Step 2 Power on the FiberChek Sidewinder probe.

Step 3 Connect a USB cable to the USB-C interface on the probe (see [“Controls and interfaces” on page 2-2](#)) and then to the computer where the FiberChekPRO inspection software is running.

The FiberChekPRO inspection software automatically detects the FiberChek Sidewinder probe and shows the name of the probe in the **Device** field on the **Import** page.



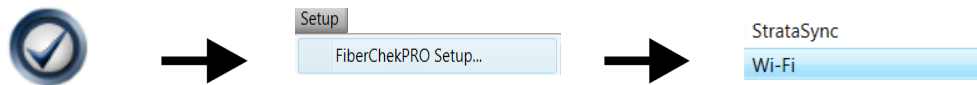
— End —

Connecting over WiFi

Important: The computer's connection to your WiFi network is lost while a WiFi-enabled FiberChek Sidewinder probe is connected to the FiberChekPRO inspection software over WiFi. Connectivity over a wired connection is not affected.

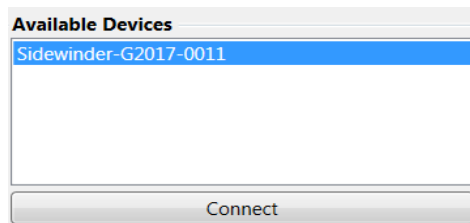
Step 1 Ensure that WiFi connectivity is enabled on the FiberChek Sidewinder probe (see [“Enabling WiFi capability” on page 2-6](#)).

Step 2 Start the FiberChekPRO inspection software, and then select **Setup > FiberChekPRO Setup > WiFi**.



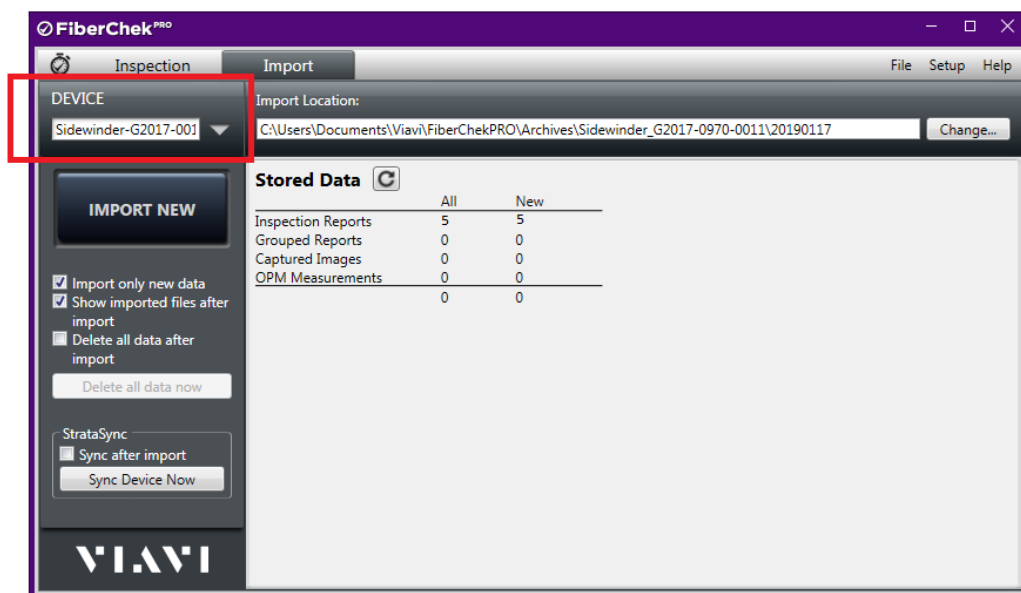
The FiberChek Sidewinder probe appears in the **Available Devices** list.

Step 3 Select the probe in the list, and then click **Connect**.



Step 4 Click **OK** to close the **FiberChekPRO Setup** window.

The name of the FiberChek Sidewinder probe you selected appears in the **Device** field on the **Import** page.



— End —

Managing optical settings

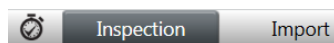
The FiberChek Sidewinder probe provides a default optical setting suitable for most MPO connectors. However, you can use the FiberChekPRO inspection software to modify an optical setting or create customized settings to suit other MPO connectors.

Note: You can use the FiberChek Sidewinder probe touchscreen to edit the active optical setting. See [“Editing the active optical setting” on page 4-3](#).

Step 1 Connect the FiberChekPRO inspection software to the FiberChek Sidewinder probe over a USB or WiFi connection. See [“Connecting to FiberChekPRO inspection software” on page 5-2](#).

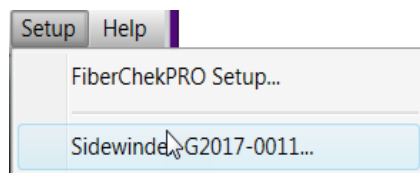
Step 2 Connect a cleaned fiber to the probe.

Step 3 Click the **Inspection** tab to acquire a live image of the fiber end.

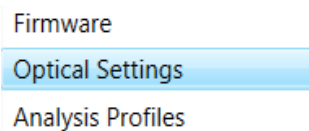


Step 4 Optionally, click the **Left Arrow** icon to pan to the leftmost fiber to achieve optimal lighting during the lighting adjustment routine.

Step 5 On the **Setup** menu, select the probe.

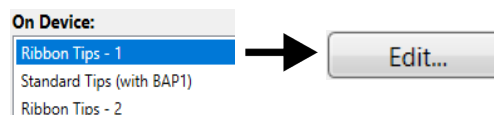


Step 6 Select **Optical Settings** in the left pane.

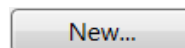


Step 7 Do one of the following:

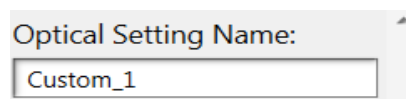
- To modify an existing optical setting, select it from the **On Device** list, and click **Edit**.



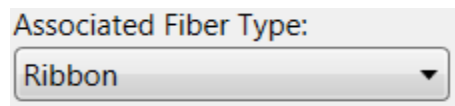
- To create an optical setting, click **New**.



Step 8 If required, type a name in the **Optical Setting Name** field.



Step 9 Set **Associated Fiber Type** to **Ribbon**.



Step 10 Click **Auto Focus**.

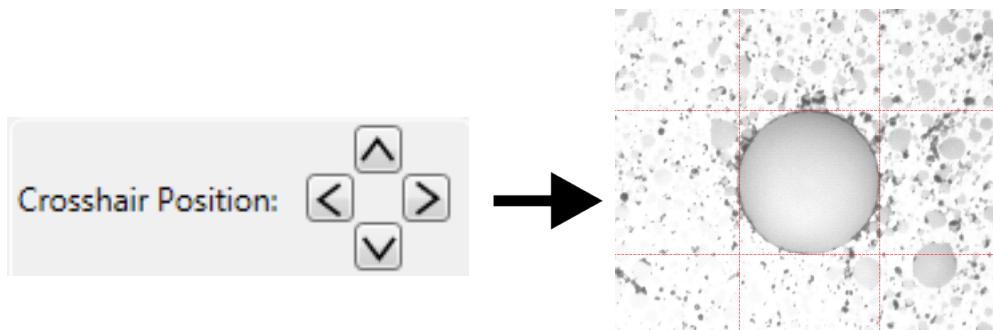


Step 11 Click **Auto Adjust Optical Setting**.



The lighting adjustment routine runs.

Step 12 Align the red crosshairs to the edges of the fiber.



Step 13 Click **OK**.

— End —

Generating reports

The FiberChekPRO inspection software lets you generate a fiber inspection report using the results of a Pass/Fail analysis. This report provides a detailed summary of each inspection performed during an analysis.

The report also includes the date and time that the test was performed, detailed fiber information and, when available, information such as company name, location, and operator information.

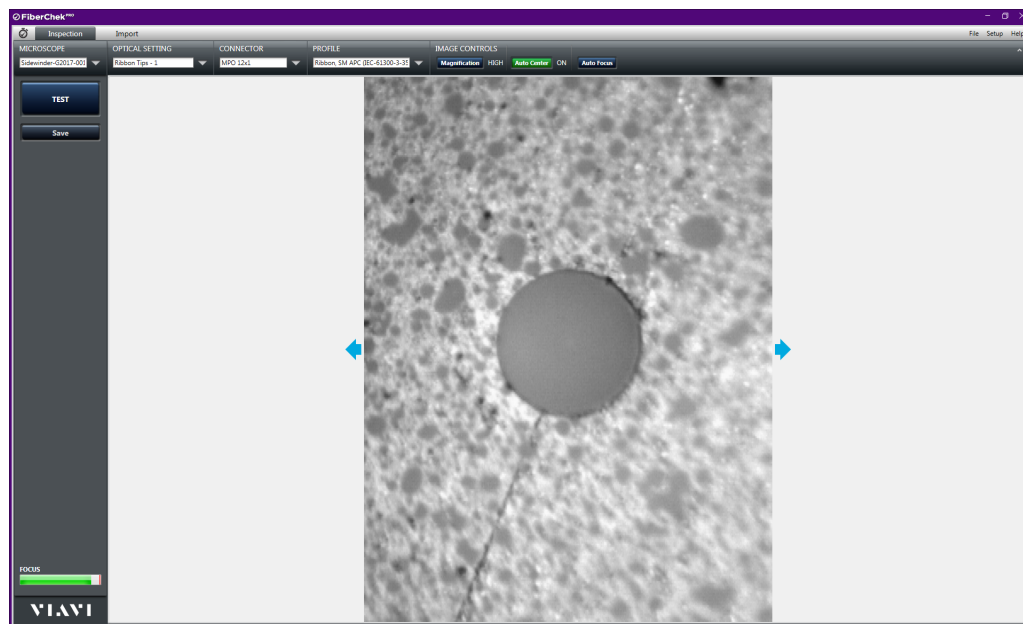
Note: The date and time information on a report reflects the date and time that the Pass/Fail analysis was performed. The format used for the date reflects the system setting on the computer where the FiberChekPRO inspection software is installed.

You can generate a report by performing a Pass/Fail analysis using the FiberChekPRO inspection software and then immediately saving the inspection data or by importing data stored on the probe during an analysis performed using a mobile device (see [“Generating reports using the FiberChekMOBILE app” on page 6-3](#)).

By default, reports are saved to the HTML file format. Refer to the *FiberChekPRO User Manual* for information about changing the default file format settings.

Performing a Pass/Fail analysis using the FiberChekPRO inspection software

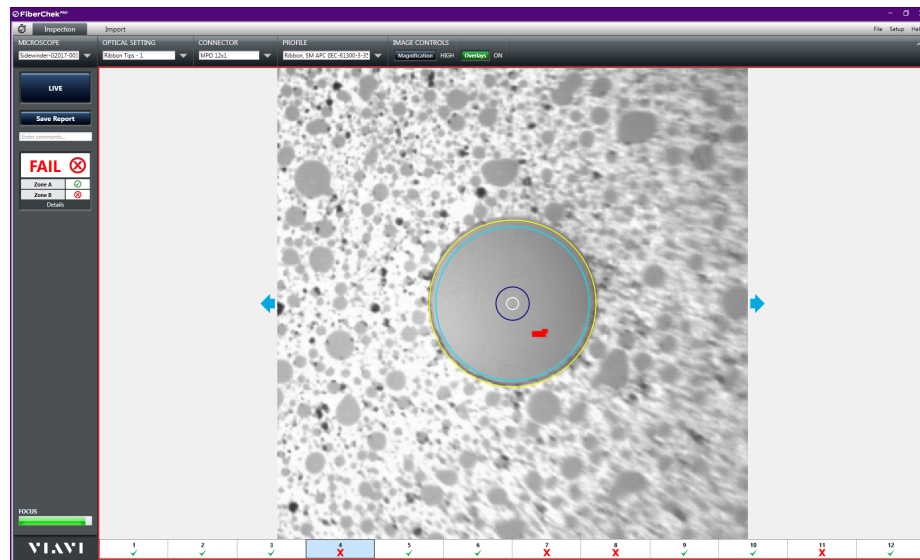
- Step 1 Connect the FiberChekPRO inspection software to the FiberChek Sidewinder probe over a USB or WiFi connection. See [“Connecting to FiberChekPRO inspection software” on page 5-2](#).
- Step 2 Connect cleaned fiber to the FiberChek Sidewinder probe.
- Step 3 Click the **Inspection** tab to acquire a live image of the fiber end.



- Step 4 Use the image controls to adjust the image for inspection. See [“Managing optical settings” on page 5-4](#) for information.

Step 5 Click **TEST** to start the Pass/Fail analysis.

When the analysis is completed, the results appear in the **Inspection** window.



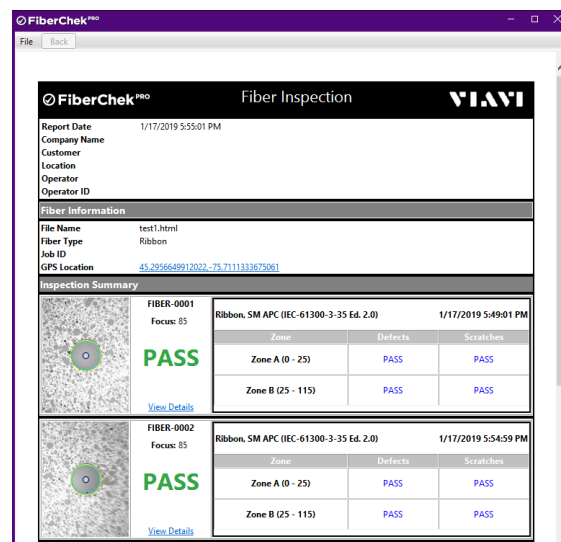
Step 6 Click **Save Report** to generate a fiber inspection report.

- In the **Save As** dialog, type a name for the report in the **File name** field, and then click **Save** to save the report to the default folder on the computer where the FiberChekPRO inspection software is installed, or navigate to another location on the computer.

The default folder is located at

C:\Users\userName\Documents\Viavi\FiberChekPRO\Archives\Sidewinder_deviceID\YYYYMMDD.

The fiber inspection report is generated and appears in a separate window.



Step 7 Close the window when you have finished viewing the report.

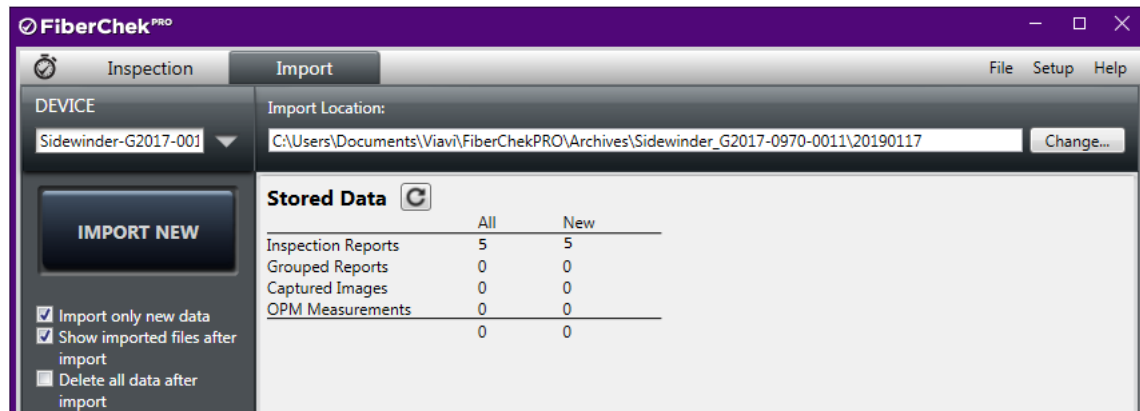
— End —

Importing data

Note: This procedure assumes that a Pass/Fail analysis has already been performed using the FiberChek Sidewinder probe touchscreen and that the results have been saved to the probe. For information, see [“Performing Pass/Fail analysis” on page 4-5](#).

Step 1 Connect the FiberChekPRO inspection software to the FiberChek Sidewinder probe over a USB or WiFi connection. See [“Connecting to FiberChekPRO inspection software” on page 5-2](#).

A summary of the data stored on the FiberChek Sidewinder probe appears on the **Import** page of the FiberChekPRO inspection software interface.



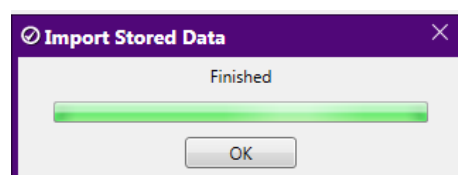
Step 2 Select the import options you require:

- **Import only new data:** To import only the data acquired after the last import operation.
- **Show imported files after import:** To allow the FiberChekPRO inspection software to automatically open the default folder where the generated fiber inspection report is saved after the import operation is completed. The default folder is located at
`C:\Users\userName\Documents\Viavi\FiberChekPRO\Archives\Sidewinder_deviceID\YYYYMMDD`
- **Delete all data after import:** To clear data stored on the FiberChek Sidewinder probe.

Step 3 Click **IMPORT NEW** or **IMPORT ALL**.

Note: The import control is labeled **IMPORT NEW** only when the **Import only new data** option is selected at [Step 2](#).

The import operation starts, and a progress dialog indicates when the FiberChekPRO inspection software has finished importing the data.



Step 4 Click **OK** to complete the import operation.

The imported files are saved to HTML format.

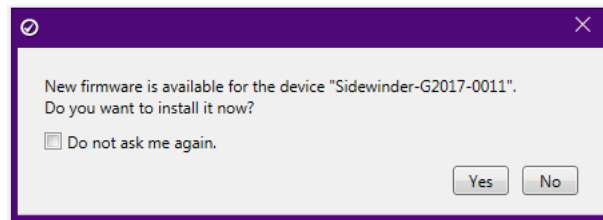
— End —

Updating the firmware

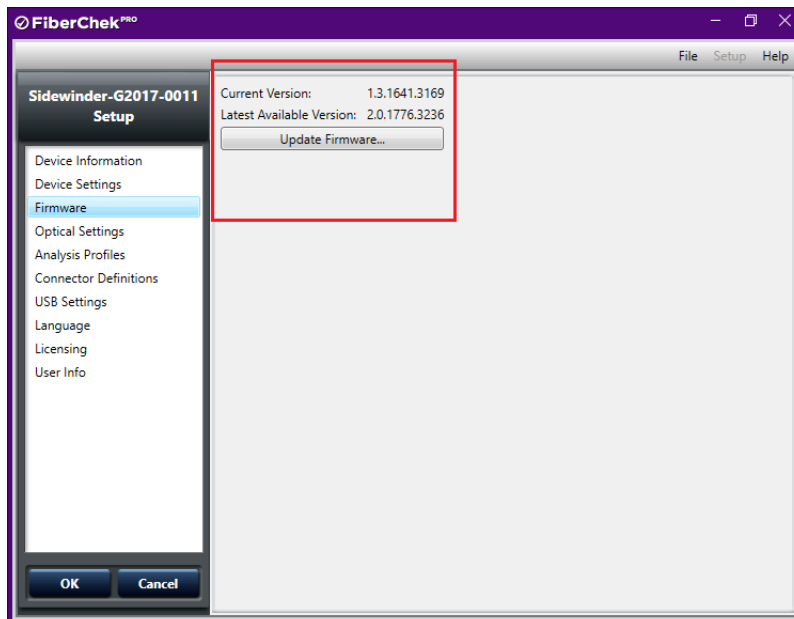
The FiberChekPRO inspection software facilitates firmware management by identifying available firmware update versions for each device it supports, including the FiberChek Sidewinder probe.

When you connect the FiberChekPRO inspection software to a FiberChek Sidewinder probe that is running an earlier firmware version, the FiberChekPRO inspection software automatically prompts you to update the firmware.

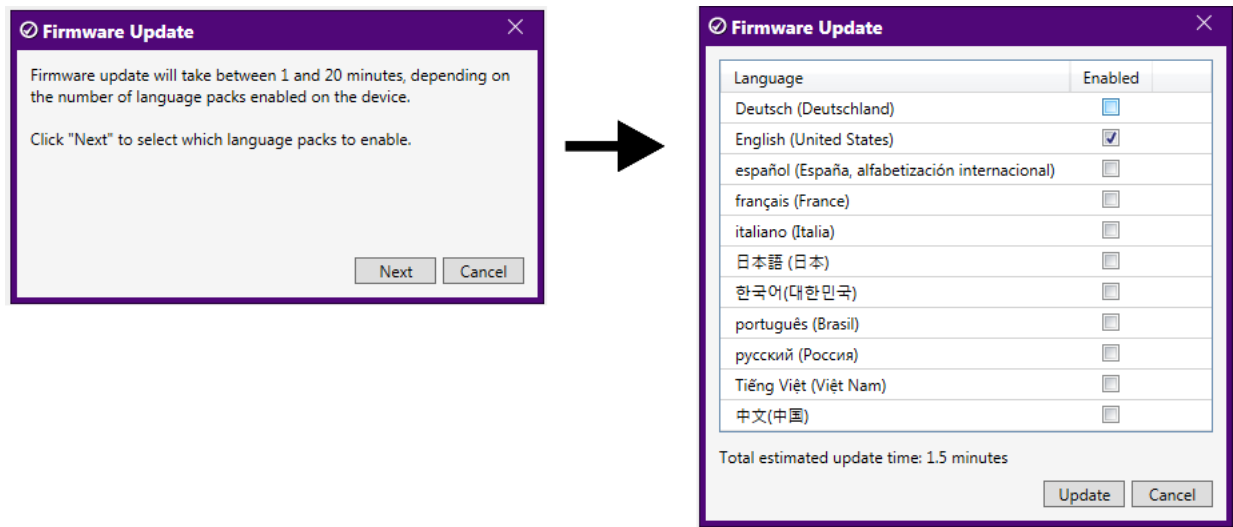
- Step 1 Connect the FiberChekPRO inspection software to the FiberChek Sidewinder probe over a USB or WiFi connection. See [“Connecting to FiberChekPRO inspection software” on page 5-2](#).
- Step 2 In the **New Firmware Available** dialog, click **Yes**.



- Step 3 On the **Setup** page, for the FiberChek Sidewinder probe, note the firmware version information, and then click **Update Firmware**.

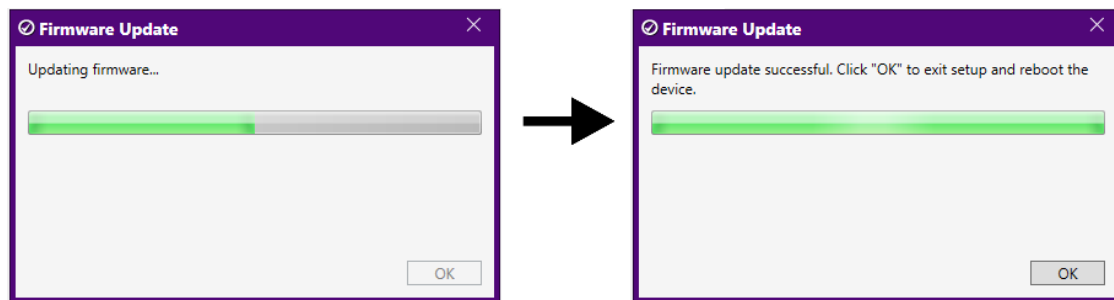


- Step 4 In the **Firmware Update** dialog, click **Next** to view available language packs, select the check box for each pack you want to enable, and then click **Update**.



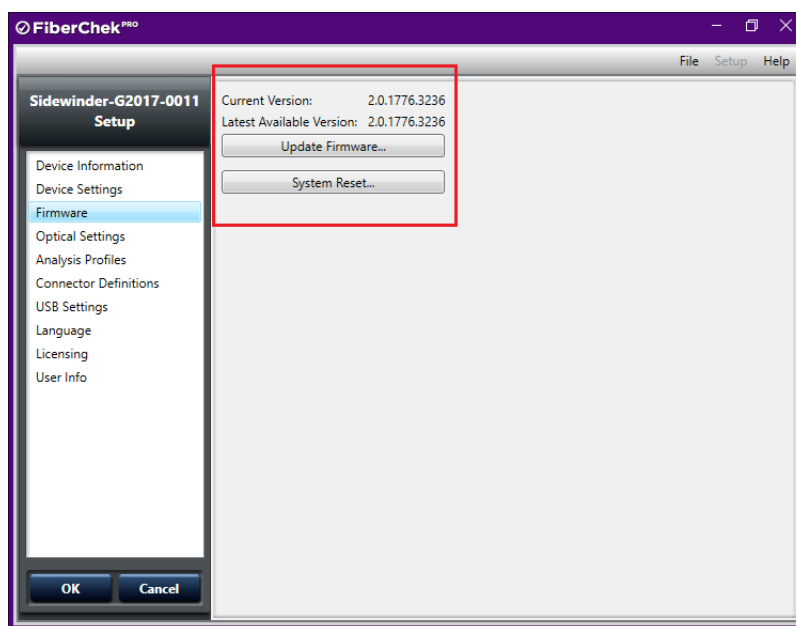
Note: Enabling multiple language packs increases the amount of time the firmware update requires.

- Step 5 Click **Update** to start the update.
- Step 6 When the update is successfully completed, click **OK** to restart the FiberChek Sidewinder probe.



After the FiberChek Sidewinder probe restarts, it automatically reconnects to the FiberChekPRO inspection software.

Step 7 Access the **Firmware** option on the **Setup** page for the probe, and note the firmware version.



— End —

Performing a system reset

When required, you can perform a system reset to return the FiberChek Sidewinder firmware to an earlier version, regardless of later firmware releases. This facilitates maintaining firmware version stability and uniformity across a fleet of deployed FiberChek Sidewinder probes.

Note: If you must return to an earlier version of the firmware, you must first perform a system reset. You can then update to a firmware version later than the version defined by the system-reset threshold.

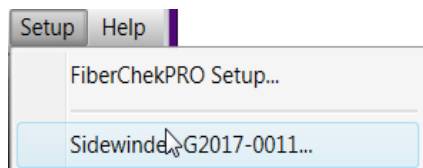
Important: VIAVI strongly recommends that you refer to the document [System Reset and Firmware Update](#) for information about the system reset process, including limitations, before you perform this procedure.

Important: A system reset will also delete all custom optical settings, custom connector definitions, profiles, and analysis results stored on the probe. Therefore, before you start the system reset procedure, ensure that all custom settings and definitions you require are available on the FiberChekPRO inspection software and all required test results are transferred to a computer. For information, see [“Managing optical settings” on page 5-4](#) and [“Importing data” on page 5-8](#).

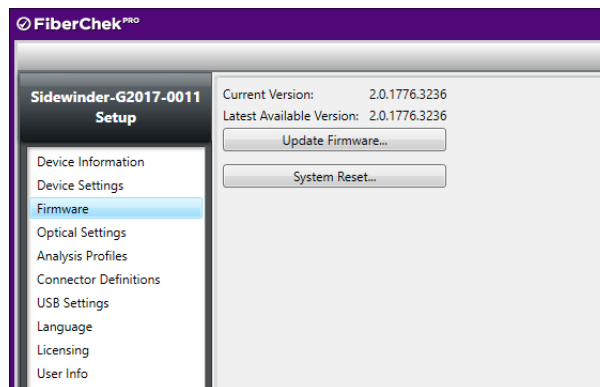
Step 1 Connect the FiberChekPRO inspection software to the FiberChek Sidewinder probe over a USB connection. See [“Connecting to FiberChekPRO inspection software” on page 5-2](#).

Note: System reset over a WiFi connection is not supported.

Step 2 On the **Setup** menu, select the probe, and then select the **Firmware** option.

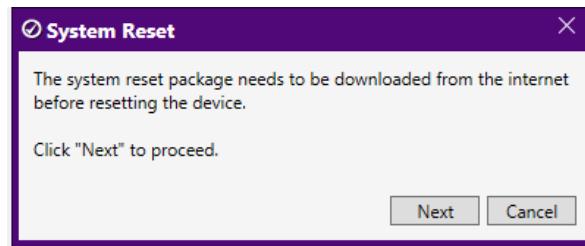


Step 3 Click **System Reset**.

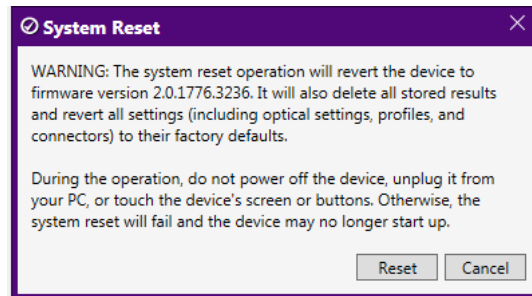


Note: The **System Reset** button is available only while the firmware version installed on the probe is either the same version defined by the system-reset threshold or a later version.

Step 4 Click **Next** to download the system reset package.



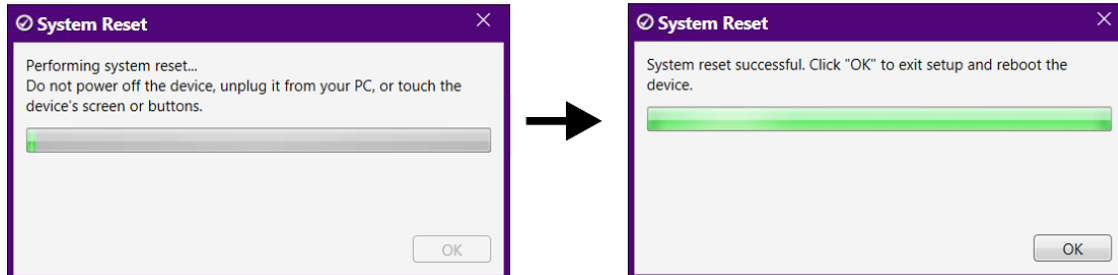
When the download is completed, a dialog containing warning information appears.



Note: This step is required only during a first-time system reset on the probe. These dialogs will not appear when subsequent system resets are performed.

Step 5 Review the information, and then click **Reset** to start the system reset.

Step 6 When the system reset is successfully completed, click **OK** to restart the probe.



After the FiberChek Sidewinder probe restarts, it automatically reconnects to the FiberChekPRO inspection software.

— End —



6 Using the FiberChek Sidewinder probe with the FiberChekMOBILE app

This section covers the following information:

- [“Connecting to the FiberChekMOBILE app” on page 6-2](#)
- [“Generating reports using the FiberChekMOBILE app” on page 6-3](#)
- [“Sending a report by email” on page 6-6](#)

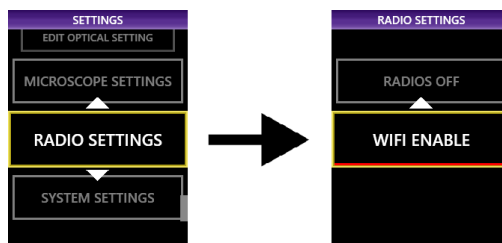
Connecting to the FiberChekMOBILE app

The FiberChekMOBILE app lets you establish a wireless connection between a FiberChek Sidewinder probe with WiFi capability (see [“Ordering information” on page 1-2](#)) and an Android or iOS mobile device. You can then perform Pass/Fail analysis tests, view inspection results, generate fiber inspection reports, and send reports by email. The FiberChekMOBILE app is available for download from the Google Play™ store (Android) or the App Store (iOS).

Note: If your mobile device supports USB On-The-Go (USB OTG) via a cable adapter, you can directly connect the FiberChek Sidewinder probe to that port to access the FiberChekMOBILE app. Refer to the documentation for your mobile device for more information.

Connecting to the FiberChekMOBILE app over WiFi

Step 1 Ensure that WiFi connectivity is enabled on the FiberChek Sidewinder probe (see [“Enabling WiFi capability” on page 2-6](#)).

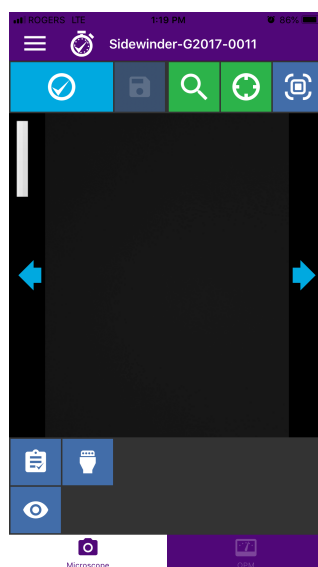


Step 2 On the mobile device, access the WiFi settings, and ensure that WiFi is turned on.

Step 3 Look for the FiberChek Sidewinder probe in the list of available networks, and then select the device to join the network.

Step 4 Start the FiberChekMOBILE app.

The FiberChekMOBILE app might require a few seconds to connect to the probe and initialize the microscope. After the microscope initializes, the navigation page appears. The following image shows the appearance of the navigation page when a fiber cable is not yet connected to the probe.



— End —

Generating reports using the FiberChekMOBILE app

The FiberChekMOBILE app lets you run a Pass/Fail analysis and then generate a fiber inspection report (in HTML format) by saving the results. This report provides a detailed summary of each inspection performed during the analysis.

The report also includes the date and time that the test was performed, detailed fiber information and, when available, information such as company name, location, and operator information.

Note: The date and time information on a report reflects the date and time that the Pass/Fail analysis was performed. The format used for the date reflects the system setting on the mobile device where the FiberChekMOBILE app is installed.

After you generate a report, you can send it to any number of recipients using an email app available on the mobile device.

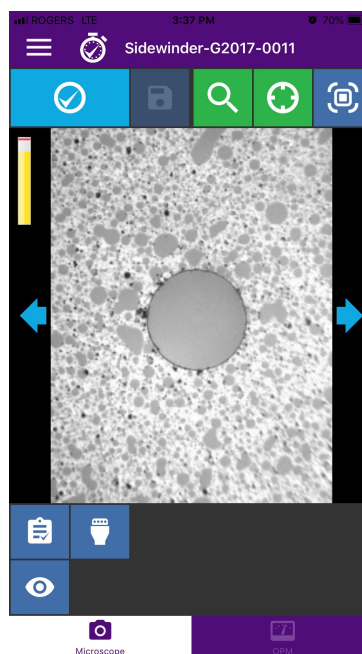
Performing a Pass/Fail analysis using the FiberChekMOBILE app

Note: The images used in this procedure show the user interface of the FiberChekMOBILE app for iOS devices, which is largely identical to the user interface of the FiberChekMOBILE app for Android devices.




Step 1 Connect the FiberChekMOBILE app to the FiberChek Sidewinder probe. See [“Connecting to the FiberChekMOBILE app” on page 6-2](#).

Step 2 Connect a cleaned fiber to the FiberChek Sidewinder probe.




A live image of the fiber end appears in the image pane of the FiberChekMOBILE app.



Step 3 Use the following icons to select the inspection settings:

Inspection Profile	Connector Configuration	Tip
		

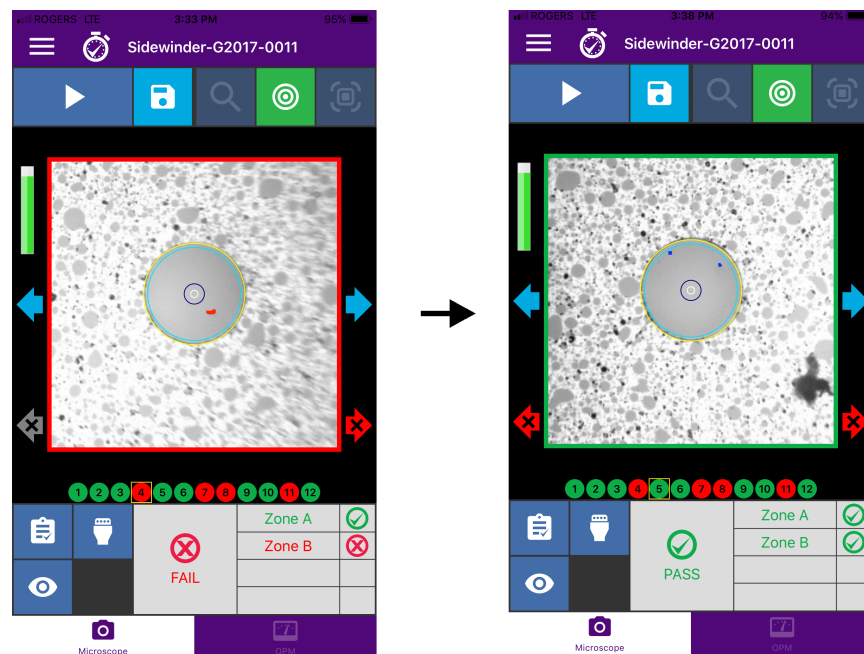
Step 4 Use the following icons to adjust the image for inspection:

Magnification	Auto Center	Autofocus
		







Step 5 Select the **Inspection** icon to start the Pass/Fail analysis.



When the analysis is completed, the results appear in the image pane.



Step 6 Use the **Next Image** icons and, when active, the **Next Fail Image** icons to scroll to the next image, respectively.

Next Image Icons	Next Fail Image Icons	
	(Active icons)	(Inactive icons)
 	 	 

Step 7 Select the **Save** icon to save the report to the FiberChekMOBILE app archives.



To return to Live view without saving a report, select the **Live View** icon.



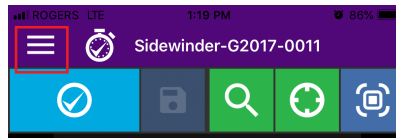
— End —

Sending a report by email

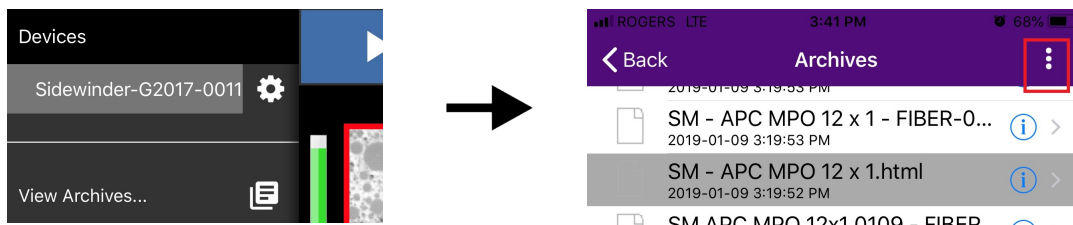
Note: The images used in this procedure show the FiberChekMOBILE app for iOS.

Step 1 Start the FiberChekMOBILE app.

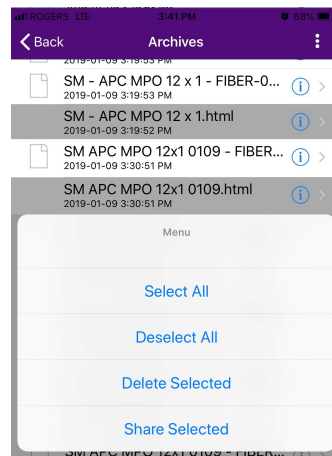
Step 2 On the navigation page, select the **Menu** icon.



Step 3 Select **View Archives**, scroll to and choose a report, and then select the **Options** icon.



Step 4 Select **Share Selected**, and then send the report via an email app available on the mobile device.



— End —



Appendix SETTINGS menu groups

This section covers the following **SETTINGS** menu groups:

- “Connector Setup” on page A-2
- “Create New Group” on page A-2
- “User Info” on page A-2
- “Recall Image” on page A-2
- “Edit Optical Settings” on page A-3
- “Microscope Settings” on page A-3
- “Radio Settings” on page A-3
- “System Settings” on page A-3

Connector Setup

The connector setup wizard guides you through the process of selecting a profile and, optionally, a connector type and optical settings. The following table describes the profiles available on the FiberChek Sidewinder probe.

Profile	Application	Connector	Optical Settings
Ribbon, SM APC	Ribbon cables with single-mode angle polished connectors. Select the options that corresponds with the connector type and tip. For example, use 12 x 1 with connectors containing one row of 12 fibers.	<ul style="list-style-type: none"> • MPO 12 x 1 • MPO 12 x 2 • MPO 16 x 1 • MPO 16 x 2 • MPO 8 x 1 	Select the optical setting you want to use. See “Editing the active optical setting” on page 4-3 for more information.
Ribbon, MM UPC	Ribbon cables with single-mode (SM) ultra-physical contact (UPC) connectors. Select the options that corresponds with the connector type and tip. For example, use 12 x 1 with connectors containing one row of 12 fibers.	<ul style="list-style-type: none"> • MPO 12 x 1 • MPO 12 x 2 • MPO 16 x 1 • MPO 16 x 2 • MPO 8 x 1 	Select the optical setting you want to use. See “Editing the active optical setting” on page 4-3 for more information.
SM UPC	Simplex cables with single-mode (SM) ultra-physical contact (UPC) connectors.	—	Simplex
SM PC & Fiber Stub	Simplex-mode cables with physical contact (PC) and fiber stub connectors.	—	Simplex
SM APC	Simplex cables with single-mode angle polished connectors (APC).	—	Simplex
MM	Simplex cables with multimode connectors.	—	Simplex

Create New Group

Groups help you to organize Pass/Fail images and test results. You create a label for a new group using the on-screen keyboard. For more information, see [“Working with groups” on page 4-7](#).

User Info

Use the on-screen keyboard to set identifying information, including Company, Address, Customer, Location, Job ID, Operator, Cable ID, Connector ID, Connector ID Base, and Job Comments. This information appears on generated reports.

Recall Image

Scroll to display a stored fiber test image. Images are labeled *connector_base_ID-001* through *connector_base_ID-nnn*. The prefix *connector_base_ID* is set by selecting **User Info > Connector Base ID**.

Edit Optical Settings

Edit Active Optical Settings

Activate the optical set-up wizard. You will be guided through the following processes:

1. Installing a clean fiber and focusing
2. Adjusting the circle diameter to fit the fiber edge
3. Adjusting the brightness level

[Exit](#)

Microscope Settings

Show Focus Meter	Turn display of the focus meter on or off in live view.
AF on Insert	Perform an auto focus automatically when a fiber is inserted.
Test on AF	Test a connector immediately after auto-focusing.
Tip Orientation	Toggle between standard key-up tip orientation and the inverted key-down orientation.

Note: When used together, **AF on Insert** and **Test on AF** can speed up fiber testing significantly.

Radio Settings

Radios Off	Disable WiFi.
WiFi Enable	Enter peer-to-peer WiFi-enabled mode for wireless communications with a device running FiberChekPRO or FiberChekMOBILE. Note: Supported on WiFi-enabled Sidewinder models only.

System Settings

Language

Select the interface language for the Sidewinder. Only languages selected while Sidewinder installing firmware will be available. You can install languages at any time from FiberChekPRO by reinstalling the firmware.

Time

Select time settings, which are used to time stamp test results and appear on reports.

Hour Format	Select the hour format. Options are 12 and 24 hours.
Year	Scroll up or down to select the year.
Month	Scroll up or down to select the month.
Day	Scroll up or down to select the day of the month.
Hour	Scroll up or down to select the hour.
Minute	Scroll up or down to select the minute.

AF Calibration

Recalibrate lens auto-focus. This feature should only be used at the direction of VIAVI support.

Panmotor Calibration

Recalibrate the motor used to pan the Sidewinder lens between fibers. This feature should only be used at the direction of VIAVI support.

Power Options

The following options can be used to conserve power on the Sidewinder. The possible values for each are Never, 1 Minute, 5 Minutes, 10 Minutes, or 30 Minutes.

Battery Screen Dim	Dim the screen after the set amount of time when on battery power.
Battery Auto Off	Turn the Sidewinder OFF after the set amount of time when on battery power.
AC Screen Dim	Dim the screen after the set amount of time when on AC (wall) power.
Auto Off	Turn the Sidewinder OFF after the set amount of time.

Touchscreen Cal

Calibrate the touchscreen. For information, see [“Calibrating the touchscreen” on page 2-5](#).

Colorblind Mode

Turn colorblind mode on or off. Colorblind mode adjusts colors to make information on the touchscreen easier for persons with red-green color sensitivity to distinguish.

Volume

Set the volume of the Pass/Fail speaker to 100, 80, 60, 40, 20, or 0 percent.

Screen Brightness

Set the brightness of the built-in screen to 100, 80, 60, 40, or 20 percent.

Note: Select the lowest viable brightness to help conserve battery life.

Screen Orientation

Standard	Set the screen to portrait mode with the top oriented away from the Sidewinder tip connection.
Rotated	Flip the screen 180 degrees. In this mode the top of the screen is oriented toward the Sidewinder tip connection.

USB Connect Mode

Full Speed	Set the USB connection to operate at USB 2.0 speed.
High Speed	Set the USB connection to operate at USB 1.1 speed.
Auto	Set the USB connection to operate at the highest speed available.

System Information

Label	Information
SNO	Device ID
LBL	Serial number found on the label on the back of the unit
FCC ID	Federal Communications Commission ID number
IC	Industry Canada ID number.
TELEC	Telecom Engineering Center Radio Equipment Conformity Certification number.
REV	Hardware revision
FW	Firmware revision
BAT xx% nnnn mV	Battery charge percent millivolt output



FiberChek Sidewinder™ MPO Inspection Probe

User Guide

22122621 Rev. 201, Standard

March 2019

English

VIAVI Solutions Inc.

6001 America Center Drive, 6th Floor

San Jose, CA 95002

USA

North America:

(Toll Free) 1-844-GO-VIAVI / 1-844-468-4284

All Other Regions:

www.viavisolutions.com/contacts